

Merton Council

Council Meeting

Membership

The Mayor: Councillor Joan Henry

The Deputy Mayor: Councillor Agatha Mary Akyigyina OBE

Councillors: Sally Kenny, Stephen Alambritis MBE, Laxmi Attawar, Michael Brunt, Thomas Barlow, Hina Bokhari, Billy Christie, Caroline Cooper-Marbiah, Anthony Fairclough, Edward Foley, Brenda Fraser, Jenifer Gould, Joan Henry, Daniel Holden, Andrew Howard, Natasha Irons, Linda Kirby MBE, Paul Kohler, Peter McCabe, Simon McGrath, Nick McLean, Aidan Mundy, Dennis Pearce, Marsie Skeete, Eleanor Stringer, Martin Whelton, Helena Dollimore, James Williscroft, Sheri-Ann Bhim, John Braithwaite, Michael Butcher, Caroline Charles, Eleanor Cox, Klaar Dresselaers, Chessie Flack, Kirsten Galea, Ross Garrod, Jil Hall, Billy Hayes, Susie Hicks, Dan Johnston, Andrew Judge, Edith Macauley MBE, Usaama Kaweesa, Samantha MacArthur, Gill Manly, Stephen Mercer, Stuart Neaverson, John Oliver, Robert Page, Michael Paterson, Tony Reiss, Slawek Szczepanski, Matthew Willis, Max Austin and Victoria Wilson

Date: Wednesday 6 July 2022

Time: 7.15 pm

Venue: Council chamber - Merton Civic Centre, London Road,
Morden SM4 5DX

This is a public meeting and attendance by the public is encouraged and welcomed. For more information about the agenda please contact democratic.services@merton.gov.uk or telephone [020 8545 3357](tel:02085453357).

All Press contacts: communications@merton.gov.uk, 020 8545 3181

Council meeting

6 July 2022

1	Apologies for absence	
2	Declarations of Pecuniary Interest	
3	Minutes of the previous meeting	1 - 4
4	Announcements by the Mayor, Leader of the Council and Chief Executive	
5	Public questions to cabinet members The questions and written responses will be circulated at the meeting.	
6	Councillors' ordinary priority questions to cabinet members The questions and written responses will be circulated at the meeting	5 - 6
7a	Strategic theme: Main report	7 - 40
7b	Strategic theme: Councillors' questions to cabinet members The questions and written responses will be circulated at the meeting.	
7c	Strategic theme: motions	
8	Reports of the Mitcham Community Forum: 22 February 2022	41 - 82
9	Report of the Morden Community Forum: 23 February 2022	83 - 96
10	Report of the Raynes Park Community Forum: 22 March 2022	97 - 102
11	Report of the Wimbledon Community Forum: 23 March 2022	103 - 120
12	Report of the Wimbledon Community Forum: 15 June 2022	121 - 126
13	Notice of motion: Liberal Democrat Motion	127 - 128
14	Notice of Motion: Labour Motion	129 - 130
15	Update on Planning Enforcement	To Follow
16	Update on Motions and amendments from Council 2021-22	To

		Follow
17	Changes to membership of committees and related matters	131 - 132
18	Petitions	
19	Business for the next ordinary meeting of the Council	

Note on declarations of interest

Members are advised to declare any Disclosable Pecuniary Interest in any matter to be considered at the meeting. If a pecuniary interest is declared they should withdraw from the meeting room during the whole of the consideration of that matter and must not participate in any vote on that matter. For further advice please speak with the Managing Director, South London Legal Partnership.

Public Information

Attendance at meetings

The public are welcome to attend meetings of the Council. Seating in the public gallery is limited and offered on a first come first served basis.

Audio/Visual recording of meetings

The Council will film meetings held in the Council Chamber for publication on the website. If you would like to film or record any meeting of the Council held in public, please read the Council's policy [here](#) or contact democratic.services@merton.gov.uk for more information.

Mobile telephones

Please put your mobile telephone on silent whilst in the meeting.

Access information for the Civic Centre



- Nearest Tube: Morden (Northern Line)
- Nearest train: Morden South, South Merton (First Capital Connect)
- Tramlink: Morden Road or Phipps Bridge (via Morden Hall Park)
- Bus routes: 80, 93, 118, 154, 157, 163, 164, 201, 293, 413, 470, K5

Further information can be found [here](#)

Meeting access/special requirements

The Civic Centre is accessible to people with special access requirements. There are accessible toilets, lifts to meeting rooms, disabled parking bays and an induction loop system for people with hearing difficulties. For further information, please contact democratic.services@merton.gov.uk

Fire alarm

If the fire alarm sounds, either intermittently or continuously, please leave the building immediately by the nearest available fire exit without stopping to collect belongings. Staff will direct you to the exits and fire assembly point. If you are unable to use the stairs, a member of staff will assist you. The meeting will reconvene if it is safe to do so, otherwise it will stand adjourned.

Electronic agendas, reports and minutes

Copies of agendas, reports and minutes for council meetings can also be found on our website. To access this, click <https://www.merton.gov.uk/council-and-local-democracy> and search for the relevant committee and meeting date.

Agendas can also be viewed online in the Borough's libraries and on the Mod.gov paperless app for iPads, Android and Windows devices.

Agenda Item 3

All minutes are draft until agreed at the next meeting of the committee/panel. To find out the date of the next meeting please check the calendar of events at your local library or online at www.merton.gov.uk/committee.

COUNCIL

25 MAY 2022

(7.15 pm - 9.01 pm)

PRESENT

(in the Chair), Councillor Michael Brunt, Councillor Edith Macauley Sally Kenny, Councillor Agatha Mary Akyigyina, Councillor Stephen Alambritis, Councillor Laxmi Attawar, Councillor Thomas Barlow, Councillor Hina Bokhari, Councillor Billy Christie, Councillor Caroline Cooper-Marbiah, Councillor Anthony Fairclough, Councillor Edward Foley, Councillor Brenda Fraser, Councillor Jenifer Gould, Councillor Joan Henry, Councillor Daniel Holden, Councillor Andrew Howard, Councillor Natasha Irons, Councillor Linda Kirby, Councillor Paul Kohler, Councillor Peter McCabe, Councillor Simon McGrath, Councillor Nick McLean, Councillor Aidan Mundy, Councillor Dennis Pearce, Councillor Eleanor Stringer, Councillor Martin Whelton, Councillor Helena Dollimore, Williscroft, Bhim, Braithwaite, Charles, Cox, Dresselaers, Flack, Galea, Councillor Ross Garrod, Hall, Hayes, Hicks, Johnston, Councillor Andrew Judge, Kaweesa, MacArthur, Manly, Mercer, Neaverson, Oliver, Page, Paterson, Reiss, Szczepanski, Willis, Austin and Wilson

1 APOLOGIES FOR ABSENCE (Agenda Item 1)

Apologies for absence were received from Councillors Butcher and Skeete who both attended remotely.

2 DECLARATIONS OF PECUNIARY INTEREST (Agenda Item 2)

There were no declarations of interest.

3 ELECTION OF MAYOR FOR 2022/23 AND THE MAYOR'S APPOINTMENT OF THE DEPUTY MAYOR FOR 2022/23 (Agenda Item 3)

It was moved by Councillor Stephen Alambritis and seconded by Councillor Martin Whelton that Councillor Joan Henry be elected Mayor of the London Borough of Merton for the 2022/23 municipal year.

Councillor Nick McLean also spoke in support of the nomination.

(Copies of their speeches are attached at Appendix A to these minutes)

There not being any other nominations, the Mayor put it to the meeting and it was

RESOLVED UNANIMOUSLY

Councillor Joan Henry signed the statutory declaration of office and was invested with the Mayor's chain and badge of office.

The Mayor announced that her Deputy Mayor for the 2022/23 municipal year would be Councillor Agatha Akyigyina. Councillor Akyigyina signed the statutory declaration of office and was invested with the Deputy Mayor's badge of office.

The Mayor announced that her consort would be Floyd Blake. The Mayor's Chaplain would be Reverend Kenneth Scott.

The Mayor presented badges to the outgoing Mayor, Deputy Mayor and their respective consorts.

The Mayor, Councillor Joan Henry thanked the Council for her election for the forthcoming year and announced that her two Mayoral charities would be the Dons Local Action Group and the Jimmy Asher Foundation.

(A copy of her acceptance speech is attached at Appendix B to these minutes)

4 VOTE OF THANKS TO THE RETIRING MAYOR (Agenda Item 4)

The Mayor invited Councillor Michael Brunt to receive the Council's vote of thanks.

The Deputy Leader of the Council Councillor Eleanor Stringer, moved and the Leader of the Liberal Democrat Group, Councillor Anthony Fairclough seconded the vote of thanks to the retiring Mayor.

In doing so, both, along with the Leader of the Conservative Group, the Leader of the Merton Park Ward Independent Residents Group and Councillor Andrew Howard all spoke in praise of Councillor Brunt's year in office.

(A copy of these speeches are attached at Appendix C to these minutes)

RESOLVED UNANIMOUSLY:

That the Council places on record its sincere thanks and appreciation to Councillor Michael Brunt for the dedicated manner in which he has served as Mayor of the London Borough of Merton for the year 2021-2022.

5 ELECTION OF LEADER OF THE COUNCIL (Agenda Item 5)

The Mayor asked for nominations for the Leader of the Council.

It was moved by Councillor Eleanor Stringer and seconded by Councillor Edith Macauley that Councillor Ross Garrod be elected as Leader of the Council.

The Leader of the Liberal Democrat Group, Councillor Anthony Fairclough, also spoke on the nomination.

There not being any other nominations the Mayor put the motion to the meeting and it was

RESOLVED

That Councillor Ross Garrod be duly elected Leader of the Council.

6 VOTE OF THANKS TO FORMER COUNCILLORS (Agenda Item 6)

The report was moved by Councillor Kirby and seconded by Councillor McCabe.

Councillor McLean also spoke on the report.

RESOLVED:

A. That, following their retirement from membership of the Council, the Council places on record its sincere appreciation of the valuable services rendered to the Borough by the former Councillors listed in the attached Appendix A and extends to them its grateful thanks for their activities on behalf of the Borough.

B. That Council notes that a Special meeting will be held on 20 July 2022 to award Alderman status to eligible former Councillors and Freedom of the Borough to Councillor David Williams MBE JP (*post meeting note: this was subsequently amended and will now be held on 5 September 2022*).

7 MINUTES OF THE PREVIOUS MEETING (Agenda Item 7)

RESOLVED: That the minutes of the meeting held on 2 March 2022 are agreed as an accurate record.

8 CONSTITUTION OF COMMITTEES AND OTHER BODIES (Agenda Item 8)

The report was moved by Councillor Garrod and seconded by Councillor Christie.

The Liberal Democrat amendment as set out in Item 9 was moved by Councillor Kohler and seconded by Councillor Bokhari.

The Liberal Democrat amendment was put to a vote and was lost - votes in favour 24, votes against 29, abstentions 2.

The substantive motion was then agreed,

RESOLVED:

That the Council:

- A. i) approves the constitution of committees, sub-committees and scrutiny bodies set out in Appendix A and;
ii) agrees the allocation of seats, chair and vice-chair positions and the appointment of members to those seats;
- B. i) approves the constitution of consultative forums and other bodies set out in Appendix B and
ii) agrees the appointment of members to those seats;
- C. agrees the allocation of seats and appointment to the outside organisations as detailed in Appendix C.
- D. agrees the terms of reference of consultative and other bodies appointed by the Council, detailed in Appendix D
- E. Notes the appointment, made by the Leader, of the Deputy Leader and her portfolio responsibilities, appointments to the Cabinet including their respective portfolios; and, if appointments are made, Assistant Cabinet members including their areas of responsibility (Appendix E)
- F. agree the membership and note the amended Terms of Reference and Rules of Procedure for the South West London and Surrey Joint Health Overview and Scrutiny Committee (JHOSC) as set out in Appendix F;
- G. To note that the Council, together with the other five South West London Boroughs comprising the area covered by the South West London Integrated Care System, will be required to jointly nominate a local authority partner member(s) to the Integrated Care Board with effect from 1 July and to delegate the authority to make that nomination to The Chief Executive
- H. To appoint Cllr McCabe, in their capacity as Chair of the Health and Wellbeing Board, to the South West London Integrated Care Partnership.

6: Councillor Ordinary Priority Questions to Cabinet Members

From Councillor Usaama Kaweesa to the Cabinet Member for Children's Services

Can the Cabinet Member please outline Ofsted's key judgements on Merton's Children's Services which means they are now confirmed amongst the best in the country?

From Councillor Anthony Fairclough to the Leader of the Council

Could the Leader of the Council describe what he found when carrying out recently publicised site visits of Clarion properties?

From Councillor Stuart Neaverson to the Cabinet Member for Local Environment, Green Spaces and Climate

Following the announcement of a further £2million fund put towards Climate Change actions, can the Cabinet member please bring us up to speed on the delivery to date of the Climate Change Action Plan?

From Councillor Nick McLean to the Cabinet Member for Finance and Corporate Services

Does the Cabinet Member recognise the threat that the ULEZ poses to hard pressed Merton households, and will they join me in calling for the Mayor of London to drop his plans for a new tax on Merton residents?

From Councillor Paul Kohler to the Cabinet Member for Sport and Heritage

Would the Cabinet Member please list the schools (and total number of participants) in Merton that have taken part in the Merton School Sports Partnership's **Junior Golf Programme** this academic year and any other Merton schools that have been included in the programme since its inception in 2014?

From Councillor Gill Manly to the Cabinet Member for Sport and Heritage

Can the Cabinet Member please update us on how she has worked to make sure people across the borough can enjoy the Wimbledon fortnight?

From Councillor Andrew Howard to the Cabinet Member for Housing and Sustainable Development

The Leader of the Council recently said that "in Merton sport is in our DNA." Does the Cabinet Member regret the decision made by the previous Labour administration and the Liberal Democrats to vote for the Local Plan which allocates the LESSA sports ground for development?

From Councillor Matthew Willis to the Cabinet Member for Transport

What does the new administration propose to do to achieve step-free access at Raynes Park station?

From Councillor Billy Hayes to the Cabinet Member for Finance

As the Cost of Living crisis continues, can the Cabinet Member outline work by the council to ensure those most in need are receiving information about support available to them?

This page is intentionally left blank

Committee: Council

Date: 6 July 2022

Wards: All

Subject: Strategic Theme Report: Supporting residents' who are most in need and promoting the safety and wellbeing of all our communities with an emphasis on Health Inequalities.

Lead member: Councillor Peter McCabe, Cabinet Member for Health and Social Care

Lead officer: John Morgan, Interim Director of Community and Housing

Contact officer: Dr Dagmar Zeuner, Director of Public Health, Cathryn James, Assistant Director, Public Protection, Clarissa Larsen, Health and Wellbeing Board Partnership Manager

Recommendations:

A. That the Council notes the progress in relation to the contents of this report.

PURPOSE OF REPORT

Council, at its meeting on 2nd March 2022, approved the new Business Plan 2022 - 2026. The Business Plan sets out five strategic priorities and each meeting of the council receives a report updating against one of the council's strategic themes.

The Business Plan sets out how the council will deliver its ambition with five strategic priorities to shape and guide delivery.

- Maintaining excellent education and skills for all ages and needs;
- Promote a dynamic, connected and inclusive community and economy with safe, vibrant high streets and jobs for our residents;
- Support residents who are most in need and promote the safety and wellbeing of all our communities;
- Ensure a clean and environmentally sustainable borough with inclusive open spaces where people can come together and enjoy a variety of natural life;
- Work to make Merton a fairer, more equal borough and support those on lower income by tackling poverty and fighting for quality affordable housing

Performance against these priorities is monitored by Council. Each meeting of Council receives a report updating on progress against one of these priorities.

This report provides Council with an opportunity to consider progress against the priorities that are to be delivered, specifically under the priority to support residents who are most in need and promote the safety and wellbeing of all our communities;

The key outcomes set out in the Business Plan relating to this theme are those set out in Merton Health and Wellbeing Strategy 2019-24. This report also provides a report on progress against the priorities of the Strategy and gives an overview of health and wellbeing in Merton with a focus on the safety and wellbeing of all our communities with an emphasis on health inequalities.

Format and scope of the report

This report sets out in brief:

Introduction and context	Section 1
Merton Health and Wellbeing Strategy	Section 2
Health in All Policies	Section 3
Health and Wellbeing Governance	Section 4
How healthy people are in Merton	Section 5
Examples of continuing work on the key themes of Merton Health and Wellbeing Strategy and Safety and Wellbeing:	
Start well	Section 6
Live well	Section 7
Age well	Section 8
Healthy Place	Section 9
Safety and Wellbeing	Section 10
Healthier Communities and Older People Overview and Scrutiny Panel contribution	Section 11

- The report includes examples relating to both physical and mental wellbeing, as well as safety and wellbeing, with a focus on health equity.
- Rather than being comprehensive, the report gives a **range of examples** of relevant initiatives and their impact.
- Links to web pages and reports are provided for each section for further information.

1. INTRODUCTION AND CONTEXT

1.1 The Business Plan and its strategic priorities for Merton have been developed in response to the Council's widest-ever engagement with residents and includes commitments to housing, regeneration, keeping the borough clean and improving high streets. It means building on our assets and the strength of our local communities and helping them to thrive.

1.2 This will involve action on the full range of determinants of health, including employment, housing, education and transport and offers a way to address inequalities, including that in life expectancy, occurring across Merton. It also forms part of our response to the current cost of living crisis; those who experience health inequalities are too often those also worst affected by the swingeing increases in the cost of food and fuel. The current crisis has clear consequences for both physical health and mental health, through the psychological pressures of poverty, debt and isolation. Working collaboratively with partners, our approach will focus on action on health, equity and sustainability, all with the clear aim of reducing the health inequalities across the borough.

2. MERTON HEALTH AND WELLBEING STRATEGY

2.1 [Merton Health and Wellbeing Strategy 2019-2024](#) focuses on the influence that the wider determinants – the air we breathe, our schools, workplaces, homes, food, transport and relationships with friends and family – have on our health. This is in line with the report on Health Equity in England: [Marmot Review 10 Years On](#) published in 2020, and is focused on tackling health inequalities so that all residents can: Start Well, Live Well and Age Well in a Healthy Place.

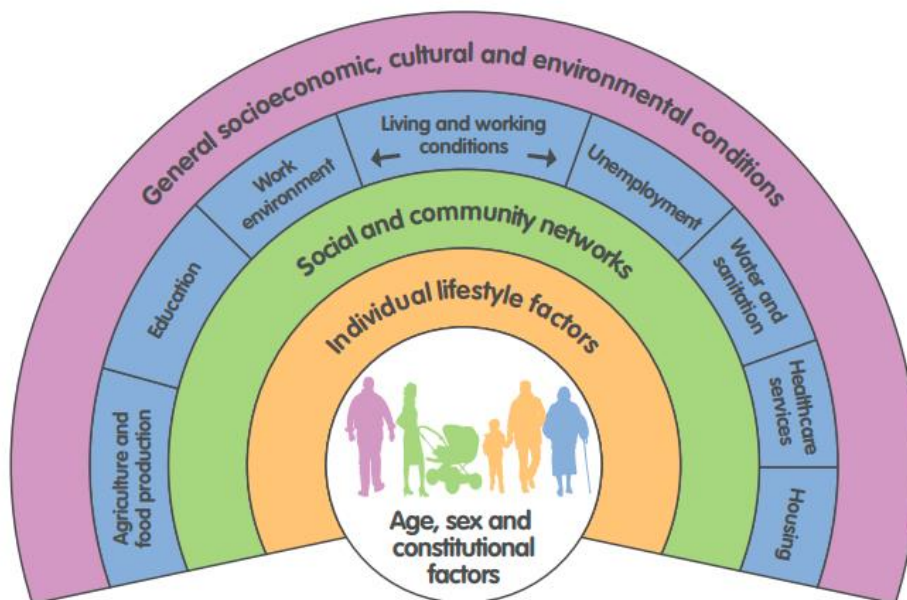


Diagram 1 – Wider determinants of health
Source: Dahlgren & Whitehead, 1991

2.2 By healthy place, we mean the physical, social and economic factors that help people lead healthy lives. The principles link to our work on Health in All Policies (HiAP) currently being developed as part of recovery. There is also a strong link to the Council’s Climate Emergency Action Plan, as a healthy place and healthy living for all are essential components of sustainability.

3. HEALTH IN ALL POLICIES (HiAP)

3.1 Health in All Policies (HiAP) is a collaborative approach that places consideration of health, equity and environmental sustainability at the centre of all policy decisions across the council and ideally across partners, HiAP can deliver benefits for a wide range of stakeholders – and most importantly can reduce inequalities while improving residents’ lives. It includes action on the full range of determinants of health.

3.2 Merton has a longstanding commitment to Health in All Policies (HiAP) reflected in our Health and Wellbeing Strategy and led by the Merton Health and Wellbeing Board. The COVID-19 pandemic has led to a worsening of inequalities across our communities. At the same time, Merton has committed to a Climate Strategy and Action Plan to tackle climate change. A HiAP approach proposes that given the interdependence and urgency of these challenges, it is vital that we find solutions that explicitly address health, equity and sustainability, simultaneously.

Every action undertaken as part of Health in All Policies should address each of these dimensions, reinforcing the impact and alignment across a wide range of council departments. Additionally, this means that each of these dimensions should be addressed by every aspect of policy making. It is for this reason the Council's Health in All Policies is being refreshed.

3.3 First published in 2016, the most recent Health in All Policies action plan was reviewed in 2018. A 2022 stock take reported in the [HiAP report to Health and Wellbeing Board](#) 21 June, has now been completed to assess progress showing substantial progress in embedding a Health in All Policies approach, including establishment of a Dementia Action Alliance, a draft Local Plan that includes a strong focus on health and wellbeing, a wide range of projects to improve air quality, the implementation of a social value toolkit in Council procurement processes and action on healthy workplaces.

3.4 The obvious ramifications of COVID-19, the current cost of living crisis and the urgent threat of climate change and our ageing population are influencing the accessibility of supplies of healthy foods, housing quality and the sustainability of local services, assets and employment. The impact of this on present and future residents of Merton makes this the ideal moment to take action.

3.5 Given that HiAP is an approach, we propose that the first part of the action plan be focused on developing the ways of working that enable the delivery of HiAP. This includes developing culture and relationships, a data led approach, external partnerships, and our cross-sector approach to return on investment.

3.6 It is also important to identify priorities for action; to identify a small number of trailblazers on a rolling basis. It is proposed that the first trailblazer be around a borough of sport, promoting physical activity in an inclusive way across the borough. Other trailblazers might include a focus on high streets, housing, or good jobs for all, for example (further details in full [report](#)). The trailblazers will need to be refined, and would ideally include a mix of initiatives, including short term wins and others which will manifest in longer term returns.

3.7 HiAP is everybody's business. The core of the HiAP action plan is thus about brokering, navigating and connecting, inviting partners to consider how they could further embed HiAP in their work. The Health and Wellbeing Board has a key role to play in strategic leadership and reviewing progress around HiAP, and given the partners around the table can play a crucial role in delivering trailblazers – for example the NHS and Voluntary and Community Sector are key partners to deliver a borough of sport and activity.

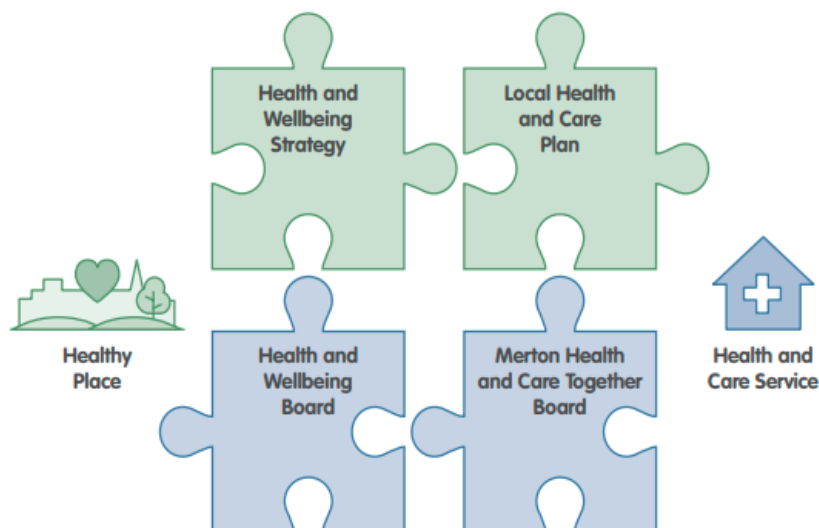
4. HEALTH AND WELLBEING GOVERNANCE

4.1 The Health and Care Act 2022 gained royal assent in April of this year and from 1st July 2022, will change the way the NHS is structured. A new South West London Integrated Care System (ICS) will come into operation, comprising an Integrated Care Body and Board (ICB) and Integrated Care Partnerships (ICP) at regional South West London level and, at borough level, a new Merton Borough Committee.

The Integrated Care System places a greater emphasis on working jointly to address health inequalities with shared responsibility for the health of the local population, and the flexibility to deliver commissioning activities differently. The changes offer potential to work more collaboratively building on our existing partnership structures:

- Merton Health and Wellbeing Board (HWBB) has been established with full statutory responsibilities since April 2013. It is chaired by the Cabinet Member for Health and Social Care and brings together the Council, Clinical Commissioning Group, HealthWatch and the voluntary and community sector. The HWBB delivers local leadership to improve health outcomes, providing the overall vision, oversight and strategic direction for health and wellbeing as set out in [Merton Health and Wellbeing Strategy 2019-2024](#), with a focus on tackling health inequalities.
- Merton Health and Care Together Board (MHCT) is a non-statutory partnership between the Council and the NHS, including providers of care and acute hospitals and reports to the HWBB. Its recently refreshed draft [Merton Health and Care Plan 2022-24](#) focuses on holistic integrated health and care services, prevention and health inequalities.

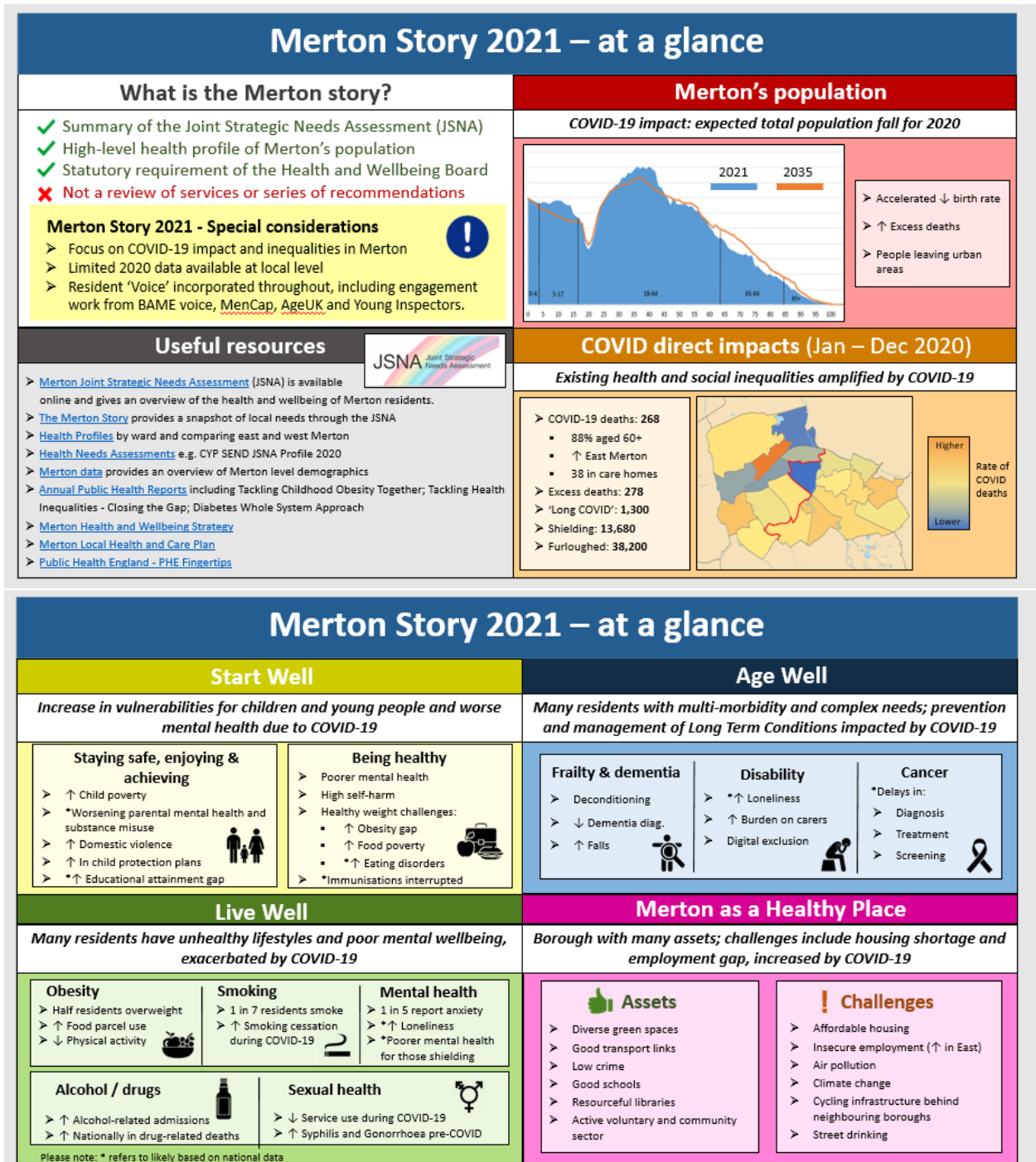
Diagram 2 – Relationship between Health and Wellbeing Strategy and Local Health and Care Plan



4.2 The new Merton Borough Committee is aligned closely to Merton Health and Care Together and the Health and Wellbeing Board and will receive local delegated NHS budget (guidance states, *‘the allocation of decision-making functions between system and place will vary across the country and should be shaped through collaborative discussions’*). Regular updates on developments are made in public reports and presentations to the Health and Wellbeing Board and shared with local GPs through the Primary Care Networks, newsletters and other communications. The Borough Committee includes as members the Merton Directors of Community and Housing, Children Schools and Families, and Public Health. It is envisaged that there will be opportunity over time for local governance structures to evolve with potential to for some streamlining.

5. HOW HEALTHY ARE PEOPLE IN MERTON?

5.1 [The Merton Story 2021](#) provides data on the health and wellbeing of people living in Merton. The Merton Story, and Joint Strategic Needs Assessment (JSNA) that informs it, is currently being updated. The recent [report](#) to the Healthier Communities and Older People's Overview and Scrutiny Panel gives details of the timescale and processes being followed. For further information please see the Public Health [JSNA and Merton Story](#) pages online. A summary version of the Merton Story 2021 is given below.



* **USEFUL RESOURCES** - for live links please see the online versions here [PowerPoint Presentation \(merton.gov.uk\)](#).

5.2 Merton Story 2021 focused on the impact of the COVID-19 pandemic. Here are the key points:

- There were 268 COVID deaths in Merton in 2020; 88% of COVID deaths occurred in those over the age of 60.
- Overall, a higher rate of deaths occurred in the east of the borough which is more deprived and ethnically more diverse; inequalities in case rates by deprivation and ethnicity have been seen in London and England.
- In 2020 there were 278 more deaths than expected, compared to previous years.
- During the COVID pandemic mental health worsened for children and young people and Merton has high admission rates for self-harm in 15-19 year olds compared with London.
- Merton residents' unhealthy lifestyles and poor mental wellbeing was exacerbated during the COVID pandemic, including reduced physical inactivity (which was worse than the London average); higher anxiety early on in the pandemic (in line with trends seen in London and England); and, an increase in alcohol related admissions compared to the previous year; with greater demand for food parcels in the east of the borough and a general overall increase in Merton since May 2020.
- Many residents with complex needs and the management of long term conditions were impacted by COVID with reduced dementia diagnosis. Also, in 2019/20 Merton had a higher rate of falls for older people than London, and anecdotally there was an increase in falls locally during the COVID pandemic.
- The COVID pandemic has highlighted inequalities between east and west Merton such as overcrowded housing (a risk factor for COVID transmission, higher in east Merton) and economic security (benefit claimant rates have increased during the pandemic and are again higher in east Merton).
- The impact of changes in the planned NHS acute service reconfiguration is covered in the externally commissioned Kings Fund report. This includes the impact that the failure to retain all services at St Helier will have on inequality and in the east of the borough which as detailed above is more deprived and ethnically diverse.

5.3 Work is currently underway to update the JSNA and Merton Story 2022 which will be reported to the Health and Wellbeing Board this September.

6. START WELL

Early Years

6.1 The early years, in particular the first 1,001 days from pregnancy to the age of two, set the foundations for an individual's cognitive, emotional, and physical development. The early years are also a time when babies and young children are most vulnerable. They require nutrition and sleep but also need to experience attachment to their parents and carers and play in order to develop and thrive. Parents generally want to do the best for their children but may need to build their skills and knowledge or overcome stressors such as isolation, poverty, homelessness, abuse and mental ill-health.

6.2 The pandemic reduced access to early education, socializing and play and has had an impact on development in the early years. Experimental statistics for 2021-2022 show that compared to the London and England average, a statistically lower % (75% in Q 3 of 2022) of 2-2.5 year olds in Merton reach or exceed all expected 5 levels of development. The impact of the pandemic has been greatest on those in low-income families, where children already had behavioural issues and disabilities and where children or their parents were clinically vulnerable. Without intervention, levels of development are likely to be lower in these groups and this is being seen in increased requests for special needs support in the school nursery and primary stages, highlighting the importance of early support to prevent escalation of needs.

Early Years Workforce

6.3 The early years' workforce provides families with the knowledge and support to prevent ill-health, to play and learn and to ensure the best possible outcomes for babies and young children in Merton. Merton's early years workforce deliver a range of services to children through the foundation years (birth to the end of reception year) in a range of settings including Children's and Health Centres, voluntary organisations and in nurseries, childminding and preschools where children access free nursery education from the age of 2 (vulnerable families) until they start school. The focus is for children in Merton to be ready for school at the end of their foundation years.

6.4 Health Visitors offer 5 nationally mandated visits to families which in Merton equates to approximately 2,400 of each visit each year. New Birth Visits are prioritised. Each visit includes an assessment of critical developmental milestones and trusted and expert advice is provided. If a family is assessed as vulnerable due to physical, mental, or social stressors, more support is available. An outreach team proactively and persistently engage with families in temporary housing and mothers in refuges. Young parents, whose babies are particularly vulnerable to poor outcomes, are referred to a Young Parents Project, where more visits as well as peer support are offered. In this way, Health Visitors prevent inequalities by identifying families who need more help to enable their babies and young children to thrive. Health Visitors are based in Children's Centres and refer directly to Early Help Services.

6.5 Early Help Services deliver a comprehensive range of evidence-based play and learning and parenting programmes and interventions which promote holistic early childhood development and positive parenting. Family and Information Service Hubs and targeted outreach provide access to information but are also able to navigate families to the services that they need. Family workers, including Portage staff, are able to provide expert support to families with more complex needs. Specific current work includes:

- Reviewing Health Visiting Services with a focus on equity and integration.
- Developing and testing a Family Hub model which aims to deliver a clear seamless service shaped by the views and experiences of parents and carers.
- Developing and testing approaches to universal speech and language development using the COLLABORATE - a model which focuses on empowering parents and communities through engagement and working better together across services, taking a community led approach.
- Testing joint GP and paediatric appointments in Children's Centres. This will ensure swift and local access to clinical advice, reducing barriers to access and building a holistic approach to child health including those with developmental delay.
- Refreshing our approach to integrated support within early years settings, supporting early identification and inclusive provision

SEND (Special Educational Needs and Disability)

6.6 Fifteen percent (15%) of pupils attending Merton's state funded schools have a Special Educational Need or Disability. 10.9% of these pupils have their needs met through enhanced support in the classroom, through what is known as 'SEN support'. 4% have their needs met through an Education Health and Care Plan (EHCP), either in a maintained school or in specialist provision. This is a high proportion compared to England, and includes a higher proportion of under 5 year olds.

6.7 The system of support offered to children with SEND follows a cycle of four stages: Plan, Do, Assess, Review, with interventions and support addressing their areas of need. In a mainstream school, the class teacher, working with the school's Special Educational Needs Coordinator (SENCO), discusses the child's needs and creates a baseline assessment against which progress will be measured. A support plan is drawn up for the pupil, implemented and reviewed regularly to monitor progress. The pupil is given extra support which is undertaken primarily by the class teacher, with support and guidance from the SENCO, and, where they are involved, other SEND professionals (for example Educational Psychologists and Speech and Language Therapists). Primary and community health services also offer advice and support to schools to deliver SEN support.

6.8 In Merton there has been a focus on improving the quality of the professional advice received as part of the EHCP process and the council has significantly improved the rate of compliance in issuing a first EHCP within 20 weeks, and Merton is above the national average. In April 2021 we recommissioned the Education

Occupational Therapy provision for pupils with an EHCP and feedback from Merton schools is that this has improved this provision.

6.9 The council is in the process of expanding the Additionally Resourced Provisions for pupils in mainstream schools with Communication Needs including children with Autistic Spectrum Condition (ASC). This will ensure that more pupils can remain within Merton schools, remain with their peer group and will not have to travel long distances to access their education. In addition Melrose extended its provision to admit primary age pupils in September 2021, which has decreased the dependency on out of Borough maintained and independent Special Schools; further expansion of Melrose will take place in September 2023.

6.10 A review of the Adult Social Care Transitions Team has taken to help ensure that young people aged from 14 years receive the right advice to plan for adulthood at the right time. In addition, the new team will ensure that young people, where eligible, receive their Care Act Assessment prior to their 18th Birthday. A Transitions Protocol and Leaflet have been written so that parents, young people, and services are clear on what to expect for Transition to adulthood.

6.11 The Council has entered into a Safety Valve agreement with the Department of Education under which the DfE will provide £28m towards the accumulated deficit on the Dedicated Schools Grant fund into return for the Council bringing the fund into balance in five years. Work is well underway on the Safety Valve plan. The Council has committed substantial resources to delivering the plan including £1.1m year for additional staff for the five years of the plan in addition to the temporary resources set aside in 2021/22 of £490k. It has also committed £500k additional funding per year General Fund contribution to the HNB and £500k each from Children's and Adults services. A combined revenue contribution of £8.4m over the five years. The council has had to make a further provision of £28.3 reserve as per the agreement if the safety plan does not balance at the end of the five years. Among the key actions are supporting more children with SEN in mainstream schools and increasing local specialist provision to reduce use of out of borough provision. A new SEND Strategic Governance Board has been established to provide leadership and oversight of all SEND programmes. We made clear that we would need additional capital to fulfil the need for more places and rapidly pulled together a bid as soon as the bidding round was opened. We were pleased to receive confirmation of £8.2m capital funding in June in addition to the £6.6m capital funding announced in April. This is in addition to £5.8m capital funding provided by the Council in 2021/22 and 2022/23. This will allow us to deliver 284 additional local special schools places starting with the Whatley Avenue annexe to Melrose School.

Children and Young People's Mental Health Support

6.12 Merton is adopting a new model of mental health support called 'i-Thrive', which is jointly led by LB Merton and SWL CCG. Under this model we have expanded the services on offer at a 'Getting Help' stage. 'Off the Record' have been commissioned to provide a self-referral talking therapies service and 'Kooth' as an

online app for young people is available across south London. Every maintained school and further education provider in Merton is now in a school mental health cluster and benefit from accessing a specialist team as well as working on a whole school model of support. These teams have been actively supporting children, parents and staff: for example, in the Mitcham Town cluster a new drama-therapy offer has been embedded, providing support to primary schools.

6.13 We know that many young people have struggled with their mental health through the pandemic and challenges include increased anxiety, increased referrals for support and increased complexity in presentations. The Merton CAMHS Board monitors referral rates to CAMHS and Off the Record, (our preventative service). CAMHS referrals dropped in lockdowns but have now exceeded pre pandemic levels and include cases of much higher complexity. We have also seen this come through in referrals to our Merton Medical Education Service (MMES) which accommodates children whose mental health means that they are struggling to access school at all. We are expanding this service and it will be moving to new and improved premises. We are also working with the i-Thrive partnership to address school absences due to increased anxiety. Off the Record take up is now above pre-pandemic levels and increased capacity has been introduced to address this.

6.14 A youth survey of 2,000 young people, and focus groups involving a further 200 young people, were led by Merton's young inspectors. Our young inspectors are young people trained to lead youth engagement and participation. One finding from this process has been that many young people were struggling with their mental health in lockdowns - but were feeling more positive being back in school and in sports clubs.

6.15 As with CAMHS teams nationally, the Merton CAMHS team has been struggling with a higher level of referrals to the service. There has been a 40% increase in referrals between Jan-March 2021 and Jan-March 2022, as well as an increase in urgent referrals which is a demonstration of the increase in complexity and risk presentation to the service following the pandemic lockdowns. The service has been able to recruit more staff through additional investment. They have also developed a comprehensive resource, a 'whilst you wait' pack, as well as signposting to digital resource/support for waiters.

Healthy Weight

6.16 The pandemic has had a negative impact on children's healthy weight with increases in obesity and eating disorders, together with significant food poverty, all underpinned by the associated impact on emotional and mental health. Obesity in childhood is a significant risk factor for poor physical and mental health in childhood and is a significant risk factor for diabetes and other health conditions into adulthood.

6.17 National and London data for 2020/21 shows the highest annual rise in obesity levels since measurement began in 2006/07. Local data for 2020/21 (unpublished) indicates that rates of overweight and obesity in Merton are similar to London, where 15 % of 4-5 year olds and 30% of 10-11 year olds are obese, and 45% of 10-11 year olds either overweight or obese. Childhood obesity is

a major health inequalities issue, with children living in the most deprived areas more than twice as likely to be obese than those living in the least deprived areas.

6.18 Evidence is emerging that restrictions during the pandemic, including stay-at-home guidance, the move to online education and closures of leisure facilities, has disrupted children's routines leading to negative impacts on sleep, nutrition and physical activity levels. The economic impact of the pandemic and the cost of living crisis has seen an increase in food poverty and impacted families' ability to maintain healthy weight through accessing and being able to afford healthier food options.

6.19 Since the pandemic, poorer mental health and wellbeing has been reported in children and young people, particularly those in care or disadvantaged financially. Poor mental health has a marked effect on obesity. There have been increases nationally in referrals to eating disorder services during the pandemic. Obesity stigma can be particularly severe for children and young people and can also lead to disordered eating, avoidance of physical activity and avoidance of support.

6.20 Obesity is a complex problem and there is no single solution, with evidence indicating that a comprehensive programme focusing on the physical, food and cultural environment is most likely to be successful, and cost effective. There is the opportunity to increase physical activity through the new commitment to Merton as a borough of sport, with a focus on inclusion across the life-course. The Young people's survey highlighted that young people value the parks and green spaces in Merton and want to have a say and play a role in how they are developed. Young inspectors are leading this as part of their role on the Children's Trust Board. Specific current work through the Merton Child Healthy Weight Action Plan includes:

6.21 Making child healthy weight everyone's business:

- 50 schools in Merton have registered for the Healthy Schools London programme, and 83 early years settings are registered for Healthy Early Years London Programme.
- 29 primary schools in Merton participate in the Daily/Active Mile
- 12 organisations in Merton are signed up to Sugar Smart, an initiative aiming to help organisations reduce sugar consumption.
- A new school meals' contract is being awarded with public health, which includes nutritional outcomes, and a move to more plant based menus.
- We are rolling out training for frontline staff on having conversations about healthy weight and being able to signpost to support, starting with support to the Holidays and Activity programme.
- A refreshed communication and engagement plan for child healthy weight is being refreshed.

6.22 Supporting children, young people and their families:

- Community Health Services which includes Health Visiting, have achieved and maintained the Unicef Baby Feeding Friendly Initiative. Breastfeeding support is provided and a specialist clinic is also available for mothers

- School Nurses deliver the ‘Familystart’ programme, a weight support service for children and their families to achieve healthy lifestyle and reduce their weight
- Investment in Merton’s Food Poverty Action Plan has ensured the continuation of Merton’s Community Fridge Network and coordination of local efforts to reduce food poverty, through Sustainable Merton.
- Local Healthy Start Voucher scheme booklet has been developed to increase families access to vouchers for free fruit, vegetables, milk and vitamins
- Children and Young People’s Social Prescribing pilot to be developed and implemented for those classified as obese or with low level emotional health.

6.23 Healthy place - shaping the places we live, learn, work and play and influencing choices on the food we eat:

- Merton’s Climate Strategy and action plan contributes to tackling child healthy weight, committing to active travel and greening the borough.
- Merton’s Local Plan adopted mechanisms to manage new takeaway restaurants within 400 metres of schools.
- Water fountains have been installed in Mitcham, Colliers Wood, Morden and Raynes Park and Wimbledon.
- A Transport for London (TFL) style advertising policy aiming to tackle unhealthy advertising and promote wellbeing implemented in Merton.
- A School Superzone pilot will be testing out ways to make the environment around schools more healthy and 10 schools have been funded to make improvements, such as developing a school garden or open space.

7. LIVE WELL

7.1 We want to better support working age adults in Merton to improve their health and wellbeing, particularly given the pressures that COVID and the current cost of living crisis place on residents. We are committed to working in partnership so that, wherever possible, our services are developed and delivered together with our diverse communities and reach the people who need them most. We are piloting health and wellbeing offers on high streets and in community and faith venues, developing more options for people to personalise their care, based on their own needs. Our focus is on both physical and mental health, as well as the wider issues that determine health, and to take action early to prevent poor health wherever possible.

Prevention Framework

7.2 Working to prevent poor health is a core part of our work to tackle health inequalities. The Prevention Framework sets out in summary how we aim to do this. It takes a 'whole system approach', with interventions at population, community and individual level. Currently being refreshed in order to establish clear roles and responsibilities for the council and our partners, the Framework seeks to embed prevention with a focus across the life course (of Start Well, Live Well and Age Well). It includes:

- Healthy lifestyles - smoking, alcohol, diet, physical activity - underpinned by social, emotional and mental wellbeing
- Specific other high priority areas including frailty and falls and loneliness
- Interfaces with many other prevention activity including screening, immunisation, sexual health, clinical risk factor reduction such as high blood pressure, atrial fibrillation.

The prevention framework sets the context for the range work taking place across the borough, to promote good health and, particularly, to target those who may experience health inequalities with support to reduce poor health.

Promoting an Active Borough

7.3 The COVID-19 pandemic has had an unprecedented impact on activity levels throughout England, but has been most acute across disadvantaged groups and in areas of high deprivation. The [Sport England Active Lives Adults Survey 2020-21](#) found that existing inequalities in activity have widened and while there are signs of recovery for activity levels as restrictions have eased, not all groups or demographics are recovering at the same rate. Some groups have been hit harder by the pandemic than others: women, young people aged 16-34, over 75s, disabled people and people with long-term health conditions, and those from black, Asian and other minority ethnic backgrounds find it harder to be active according to the survey. Tackling these inequalities and helping people to get active can play a role in boosting people's physical health, building resilience and strength and also supporting mental wellbeing, helping to tackle both loneliness and anxiety.

7.4 The *Merton Can* physical activity campaign was developed to encourage everyone in Merton to be more physically active. It promotes the benefits of moving

more and sitting less and encourages every day activity, promoting our services and great community assets including the parks and open spaces that we have in Merton. In 2020 this campaign comprised of 20 free and low cost activities aimed at increasing physical activity amongst

- Babies and Toddlers
- Children and young people
- Adults

7.5 In 2022 we refreshed the *Merton Can* Campaign (see [Merton Can: tips to get active | Merton Council](#)) under the strap-line 'try 22 in 2022' to include 22 free and low cost activities for Merton residents, we also expanded the cohort groups to include

- Pregnant women
- Babies and Toddlers
- Children and young people
- Adults
- Adults and older adults (frailty)

Merton Can supports residents to understand the benefits associated with leading an active lifestyle, which includes better mental health and physical health. We also want to promote the social benefits of being physically active, by connecting people; through joining regular walking group, joining a sports club or playing in the park.

7.6 We know that 75% of Merton's population are physically active for more than 30 minutes per week but that means that there are still almost 1 in 4 people in Merton that are not, and are therefore physically inactive (Active Lives Survey November 2019 - November 2020, Sport England). Being active has benefits for everyone, young or old, it's never too early or late to start getting the benefits of an active lifestyle.

Social prescribing

7.7 Social prescribing is a means of enabling primary care services to refer patients with social, emotional or practical needs to a range of local, non-clinical services, often provided by the voluntary and community sector. In Merton, social prescribing has gone from strength to strength and this year is celebrating its fifth anniversary. Through a partnership, jointly funded, approach all 22 GP practices in Merton are now taking part in the programme, strengthening the links between primary care, voluntary sector and council services.

7.8 From April 2021 to March 2022, 2,892 new referrals were made to the team. The top referral issues were mental health issues, advice on benefits, financial advice and housing and support for social isolation. The ONS Patient Wellbeing score (Dec 2021 to March 2022) showed an improvement of 68.1%. Target utilisation rate (appointments) averaged 86% against a target of 80%, which equates to 560 hours of appointments each month.

Green Social Prescribing

7.9 In order to support and develop options for social prescribers Merton initiated a green social prescribing activities programme in February 2022. Merton's green spaces give people a chance to connect with nature, relax, meet others and feel connected to their community. Green spaces are also important for physical and mental wellbeing providing places to exercise and participate in the activity and sport facilities they offer. There is opportunity for greater use of outdoor space in Merton, building on the benefits that these assets offer.

7.10 The Walk and Talk Movement have been commissioned to provide a service until May 2023 to making use of green spaces and are currently rolling out a tried and tested model of 'walk and talks' from Wimbledon to other locations in the borough, extended to cover both Mitcham and Morden.

7.11 A small grants programme of £67,000 (via Merton Giving) has been established for local organisations to pilot of green related provision. Aiming to develop green social prescribing and provide opportunities to for people to work towards a healthy weight, tackle mental health issues and support those who experience social isolation.

One You Merton

7.12 One You Merton is our 'front door' into preventative services in Merton. It comprises of four elements,

- Outreach, engagement and community resilience
- Universal digital offer which provides information and brief advice on smoking, healthy eating, physical activity, mental wellbeing and alcohol consumption
- A targeted smoking cessation programme
- Frontline training

7.13 The One You Merton service continues to provide improved outcomes to promote the health and wellbeing of our residents. For example it expanded its targeted stop smoking service during the COVID-19 pandemic to include BAME communities, due to the disproportionate impact the pandemic had on these communities and the additional risk of severe outcomes such as hospitalisation and death associated with smoking. Between April 2021 and December 2022, 43% of people supported to stop smoking from BAME communities reported successfully quitting smoking. Merton is continuing to build on these services through commissioning more activity based programmes.

Health on the High Street

7.14 Health on the High Street (HOTH) is an approach to help change how people access health and wellbeing services, piloting health and wellbeing hubs on the high street and in community venues across Merton. The pilot aims to demonstrate the effectiveness of community health on the high street by:

- Bringing services (COVID-19 vaccination and testing, holistic health and care, prevention and welfare) to where people live their lives e.g. the high street,
- Providing support in an integrated way rather than expecting people to attend numerous different services,

- Reviving the high street.

7.15 In its initial phase the project will focus on addressing some of the key issues affecting the three life stages; for Start Well this is Mental Health; for Live Well, obesity and cancer; and for Age Well, loneliness. Since starting in March 2022, the project manager has engaged with the voluntary sector and council and NHS commissioned services to identify initial projects which can be trialled across the borough.

7.16 HOTH is working with youth counselling service Off the Record to hold sessions in Collier’s Wood Library for three months, to compare if this is a better location for children and young people to receive support. This has potential to expand to other locations across the borough and lead to a strong partnership with the Libraries Service as a base for Mental Health support.

7.17 The project is supporting the Biggest Issue survey work in East Merton to generate discussion about healthy weight to help inform a local plan to support healthy weight services. The project is also exploring moving cancer screenings into locations across the borough, as currently residents need to travel out of borough to St George’s in Wandsworth to access this care.

7.18 The pilot is working with Merton’s Dementia Hub on a series of outreach pop-ups and drop-ins across the borough, out of their base in Mitcham. This can help reduce health inequalities for residents who may not be able to access this support due to transport issues, and learning can be applied to other services and similar schemes with other organisations. We will also work with local voluntary sector groups to use the council and NHS’s communications and engagement resources to increase public awareness of the services offered to older adults in the borough.

Mental Health and Suicide Prevention

7.19 There were 18 suicides in Merton registered in 2020, and a total of 38 suicides in Merton during 2018–20¹. This is equivalent to an age-standardised rate of 6.9 deaths per 100,000 people (95% CI: 4.8–9.5) during 2018–20, which is similar to the suicide rate in London (8.0, 7.6–8.4 deaths per 100,000) and lower than the suicide rate in England (10.5, 10.2–10.5 deaths per 100,000). The suicide rates observed in Merton are similar to other neighbouring SWL boroughs.

Borough	Suicide rate per 100,000 persons in 2018–20 (95% confidence intervals)
Sutton	11.0 (8.3 - 14.2)
Richmond upon Thames	9.9 (7.3 - 13.1)
Kingston upon Thames	9.1 (6.5 - 12.3)
Croydon	8.6 (6.8 - 10.7)
Wandsworth	8.0 (5.9 - 10.5)
Merton	6.9 (4.8 - 9.5)

Where 95% confidence intervals overlap, we are unable say there is a difference between the suicide rates between SWL boroughs. Source: OHID (2022) Fingertips tool: Suicide Prevention Profile for Merton. Available from: <https://fingertips.phe.org.uk/suicide#page/1/gid/1938132828/pat/6/ati/202/are/E09000024/iid/41001/age/285/sex/4/cat/-1/ctp/-1/yr/3/cid/4/tbm/1>

The suicide rate is higher among men (10.0, 6.4–14.8 per 100,000 people) compared to women (4.0, 1.9–7.2 per 100,000 people) in Merton, in line with trends seen in the rest of the country.

Source: OHID (2022) Fingertips tool: Suicide Prevention Profile for Merton. Available from:

<https://fingertips.phe.org.uk/suicide#page/1/gid/1938132828/pat/6/ati/202/are/E09000024/iid/41001/age/285/sex/4/cat/-1/ctp/-1/yr/3/cid/4/tbm/1>

7.20 One way of measuring the impact of suicide in Merton is to look at years of life lost due to suicide, which estimates the length of a time a person would have lived if they had not died prematurely. In Merton, the years of life lost is lower than the national estimate for men and for persons, but is similar for women.

Years of life lost due to suicide (age-standardised rate per 100,000)	Merton	England
Persons	23.4 (15.7–33.4)	34.0 (33.4–34.6)
Men	30.4 (19.1–45.8)	51.5 (50.4–52.6)
Women	16.9 (7.2–32.4)	16.5 (15.9–17.1)

The data shows age-standardised rate of years of life lost due to suicide among 15-74 year olds per 100,000. A three-year average is presented for 2018–20. Data for London is not available.

Source: OHID (2022) Fingertips tool: Suicide Prevention Profile for Merton. Available from:

<https://fingertips.phe.org.uk/suicide#page/1/gid/1938132828/pat/6/ati/202/are/E09000024/iid/41001/age/285/sex/4/cat/-1/ctp/-1/yr/3/cid/4/tbm/1>

There is a significant and persistent risk of future suicide following hospitalisation for self-harm. Emergency admissions for intentional self-harm in Merton was 91.0 (95% CI: 78.1–105.4) per 100,000 in 2020–21, which is similar to London (82.7, 80.8–84.6) and lower than England (181.2, 180.1–182.3).²

7.21 Work continues to deliver the annual action plan of [Merton's Suicide Prevention Framework 2018 -2023](#) which, during 2021/22, has included partnership working with South West London Clinical Commissioning Group to deliver a number of projects:

- A programme of training offered to secondary schools/colleges in Merton and those working with young people on suicide prevention and awareness with youth charity, Papyrus.
- SWL CCG alongside Council and CAMHS and community and voluntary sector partners are developing a protocol on supporting young people at risk of self-harm and suicidal ideation.
- Training has continued providing a programme of Mental Health First Aid and Suicide Prevention courses in Merton.
- We have worked with MIND to promote suicide prevention champions (who also offer suicide awareness training) to the community and voluntary sector, including a session with Merton's community champions.
- We have secured £15,000 in funding from SWL CCG for work on self-harm amongst young people and suicide prevention activity.

- We have engaged with rail companies to check on their suicide prevention activity across stations in the Borough and their network.
- The first suicide prevention Forum was held including a presentation and discussion on the impact of COVID-19 and potential risk of suicide to at risk groups.

Residents with a disability

7.22 Work continues to support residents with a disability and their parents and carers including important work with disability organisations such as Merton Mencap to support digital access for people with a disability. Other areas of focus include

- Working with organisations as part of the Carers Strategy work to support carers and family members of people with a disability
- Engaging with organisations including disability organisations to co-produce the new Strategic Partner Programme that provides preventative services to Merton residents including people with a disability
- Commissioning Services to provide information, advice and practical support to residents who are isolated including people with a disability through the Merton Community Hub and Wider Voluntary Sector and Community Response
- Working with people with a learning disability through the Community Activities review following the Big Conversation and Big Explore engagement work.
- Providing support to people with a hearing impairment through a deaf drop-in and support via Deafplus
- Providing support to people with a visual impairment by commissioning services with MertonVision
- Providing Direct Payments as a positive alternative to ‘traditional’ care packages so that people with a disability can exercise greater choice and control over how their care and support is delivered.

7.23 For the council’s Provider Services, all customers have a care and support plan, which has a section on health and wellbeing. In day services staff liaise with carers and residential/supported living staff to ensure there is consistency with support and that all health appointments are met and medication administered. In residential and supported living, staff have the responsibility to support residents to manage their health and in terms of medication and health management and the service is subject to Care Quality Commission regulation and inspection. Customers are supported to make positive choices around healthy eating, exercising and enjoying good mental health by engaging in a range of social and learning activities.

7.24 During the COVID-19 pandemic staff worked closely with Public Health colleagues to ensure that all infection control guidelines were followed and residents

enabled to have their vaccinations. Services were successful in helping to have very few COVID infections amongst our customer group.

Sexual Health

7.25 Work has re-started post COVID to take forward the priorities identified in [Merton's Sexual Health Strategy 2020-2025](#). The strategy and associated implementation plan recognise that sexual health and wellbeing impact on, and are affected, by wider determinants of health, including the social, economic and environmental issues which shape daily life and impact on people's health.

7.26 Prevention is a priority and although a universal approach is identified it is also recognised that certain groups, such as under 25s, men who have sex with men and black and minority ethnic groups, are disproportionately affected and so targeted interventions are required. Current work includes:

- Procurement of a targeted service for those most at risk of poor sexual health which will include mentoring, support for schools, counselling, advocacy services, support for families newly diagnosed with HIV, information & advice.
- Pilot of GP Federation run hub to widen access to long acting reversible contraception across the borough.
- Dedicated walk in clinics provided by the integrated sexual health for under 18s, gay men and chemsex (sexual activity while under the influence of stimulant drugs).
- A co-ordinated response to strengthening and embedding sexual health knowledge and support and providing training to inter-linked services particularly for those: experiencing poor mental health; living and ageing with HIV; experiencing domestic violence or dealing with previous past abuse; who are the victim of child sexual exploitation and who are using substances.
- Supporting schools with relationship and sex education, including drama workshops.

8. AGE WELL

8.1 The Council are working with a range of partners are committed to ensure prevention is embedded into the work we do, so that older people are able to lead healthy, active and fulfilling lives and to age in a way that promotes as much independence as possible. Work this year has focused on a number of key areas including frailty and physical activity, dementia and creating greater social connectivity for older people.

Frailty, Falls Prevention and promoting an 'Active Ageing' Approach

8.2 Frailty¹ is important as it is linked to our ability to carry out day to day activities and therefore linked to our ability to maintain independence. Nationally it is estimated that 25% of over 65's and 25-50% of over 85's live with frailty². Falls are important as they are the number one reason for older people to be admitted to hospital and outcomes for the worst type of falls, hip fractures, can include disability and mortality. Falls can limit an older person's confidence to go outside, risking isolation and loneliness and reduced quality of life. Regular physical activity can help address both frailty and the risk of falls. It also can reduce the risk of long-term conditions and create opportunities for social connection with others.

8.3 National research shows older people are less active than younger people and those living in more deprived communities are more likely to be inactive. This may be due to a range of factors such as lack of open green space, fear of crime and transport issues. COVID-19 has also led to concerns outlined by Public Health England research around older people 'de-conditioning', as exercise classes closed and older people had less opportunities for activity such as going to the shops or to meet friends. This has potentially increased the risk of frailty and falls amongst older people.

'Get up and Go' Programme

8.4 As part of a pilot project Public Health have commissioned a £158,000 programme of strength and balance and physical activity classes for those aged 65+ in East Merton and Morden Primary Care Network (PCN) areas, where rates of frailty are highest. The areas also have higher rates of admission for hip fractures³. The programme will run from end of June 2022 to August 2023 including activities such as 'Move it or Lose it' strength and balance activity, Nordic walking, New age Kurling and Bowls, Tai Chi and Dance classes. More activities will be added as the programme is established over the next few months. The programme also includes a 'train the trainer' element and small grants programme to support community and voluntary sector groups establish physical activity groups or sessions.

The focus on physical activity in East Merton and Morden areas should help address health inequalities and increased levels of frailty in these areas. Over the longer term, and dependent on evaluation of the project and funding availability, we will explore rolling the programme out Borough wide.

Merton Moves Project with Wimbledon Guild

8.5 Merton Council Public Health also fund (£20,000 over 20/21) Wimbledon Guild's 'Merton Moves', a six week coaching project working 'one to one' with older

¹ Frailty describes reduced resilience with slower recovery after a period of ill health. It is a long-term condition associated with reduced muscle mass and fatigue. Frailty is associated with falls, immobility and incontinence.

² Age UK <https://www.ageuk.org.uk/our-impact/policy-research/frailty-in-older-people/understanding-frailty/>

³ Merton Story 2021, page 103.

people to take up physical activity. To date nearly 100 people have been supported through the programme starting up activities including walking, tennis, pilates and yoga. Coaching is available borough wide and the Guild have worked with smaller community organisations in the East of the Borough to ensure the offer is available throughout Merton. Latest performance data puts 39% of clients from an ethnic minority and 28% from Mitcham postcodes and 18% from Morden postcodes. For 2022/23 the project is continuing with further funding of £18,000.

Dementia

8.6 The number of people in Merton with dementia is predicted to increase from 2,050 to 3,300 by 2035, with only 70% currently diagnosed⁴. Dementia prevalence is unequally distributed in the borough. East Merton has a higher percentage of dementia (0.7%), whereas North, Northwest and West Merton (0.5% for all) have the least. The incidence of dementia nationally is linked to socio-economic factors, with greater risk of developing dementia found amongst those with the lowest incomes compared to those with the highest incomes⁵. Deprivation is also associated with increased dementia mortality, younger age of death and poorer access to specialist diagnosis⁶.

8.7 Ethnic minority communities may face a number of inequalities around dementia and access to support. These include knowledge and awareness of dementia, reluctance to engage with services (such as due to fear of discrimination), the existence of 'stigma' around dementia within communities and lack of knowledge of local services and support that is available. Carers may also feel isolated from services and reluctant to ask for help⁷.

Community Dementia Services

8.8 The Council commissions a range of community dementia services with the Alzheimer's Society with the aim of keeping people living with dementia as independent as possible for as long as possible. Services based at the Dementia Hub in Mitcham, but also out in the wider community, include advice, information and education, wellbeing assessment and support planning, peer support, activities and volunteering support.

8.9 During 2021/22 Public Health and Adult Social care staff have worked to re-design community dementia services, taking into consideration results of consultation and working collaboratively with the current provider, the Alzheimer's

⁴ Merton Story 2019

⁵ Individual and Area-Based Socioeconomic Factors Associated With Dementia Incidence in England Evidence From a 12-Year Follow-up in the English Longitudinal Study of Ageing, Cadar, D et al, (2018), JAMA Psychiatry. 2018;75(7):723-732. doi:10.1001/jamapsychiatry.2018.1012

⁶ The Influence of Socioeconomic Deprivation on Dementia Mortality, Age at Death, and Quality of Diagnosis: A Nationwide Death Records Study in England and Wales 2001–2017, Jitlal M et al, (2021), Journal of Alzheimer's Disease vol 81, no 1 pp321-328.

⁷ SCIE research briefing 35, "Black and Minority Ethnic people with dementia and their access to support and services", Moriarty, J et al, (2011) available at [SCIE Research briefing 35: Black and minority ethnic people with dementia and their access to support and services](#)

Society. Still based in the East of Borough at the Dementia Hub in Mitcham, the new community emphasis has increased engagement and presence with voluntary, community and health partners across the Borough as well as increased co-location of other partners at the hub, for example Wimbledon Guild offer their bereavement support service (aimed at older people bereaved due to COVID-19) one day a week from the Hub. The service in 2021/22 also trained two staff to run the START programme, offering one to one tailored advice for carers, with the aim of addressing particular issues around caring for someone with dementia. In this regard Merton is a front-runner as we understand this service is only being offered in Merton compared to other South West London boroughs.

Dementia Friendly Merton

8.10 Merton is committed to being a Dementia Friendly Borough, where awareness of dementia is widespread and people know how their actions, however small, can support fellow residents. Being dementia friendly is vital for both people living with dementia but also their family and carers, supporting wider aims around keeping people independent in their homes for as long as possible. Work on this agenda also includes community engagement and awareness raising around dementia.

8.11 During 2021/22 Merton's Dementia Action Alliance (MDAA) has focused on responding to some of the inequalities highlighted by local and national research on the impact of Covid-19 on people living with dementia and carers. Key local issues included increased loneliness and isolation and linked to this, digital exclusion. Responding to this, an MDAA meeting this year focused on digital inclusion, promoting a number of local support schemes that can help residents. Further, it led to a collaboration between a local training college and the Alzheimer's Society to offer IT workshops for people living with dementia. Other meetings have included a focus on equalities, raising awareness of dementia issues facing ethnic minorities, LGBTQ communities and people living with a learning disability.

8.12 Other key work has included engaging with faith and ethnic minority community organisations on dementia, increasing MDAA Membership and running dementia friends' awareness sessions.

Addressing social isolation and loneliness

8.13 Social isolation and loneliness can impact our physical and mental health. For example it increases risk of mortality, risk of stroke and cardiovascular disease, risk of high blood pressure and alongside social isolation is a risk factor for frailty. Loneliness also increases our risk of cognitive decline and dementia and is one predictor of suicide risk amongst older people⁸.

8.14 Whilst people of all ages can face loneliness and isolation, older people in particular face a range of factors that put them at greater risk. This includes ageing and bereavement of partner and friends, family moving away such as for work, increased risk of long-term conditions and frailty that may limit ability to get out and

⁸ Summary available from <https://www.campaigntoendloneliness.org/threat-to-health/>

about to meet people. COVID-19 has also impacted older people disproportionately and their ability to connect with others.

8.15 Merton Council Public Health commission a befriending service for older people aged 65 and over. The scheme matches a volunteer to an older person, based on shared interests. Run by Age UK Merton in partnership with Wimbledon Guild, in 2021/22 the service recruited 72 new volunteers and matched 123 new clients with a volunteer. The current service runs until March 2023 and we are currently in the early stages of plans to re-commission the service.

9. HEALTHY PLACE

9.1 The local environment is a key shaper of people's health and wellbeing. Across the Council and with partners we are working to create a healthy place in Merton. This work links closely to the ongoing delivery of the Merton Climate Strategy and Action Plan, as healthy living is beneficial for the health of people and the planet. It also links to initiatives to support people into employment, to develop skills and more broadly to promote community connectedness and wellbeing.

Libraries as Health and Wellbeing Hubs

9.2 Merton's libraries play an important and visible role as the 'High Street presence' of the Council and play a vital role in supporting and signposting residents to information and accessing Council services. Our seven libraries already host a range of groups and services that support our communities, including health and wellbeing services of healthy eating, sexual health, diabetes, mindfulness and smoking cessation, as a year round approach to promoting healthier lifestyles.

9.3 *Tuned In* is a project that aims to combat loneliness by facilitating musical jam sessions every Monday at Merton Arts Space, Wimbledon library. The sessions share and develop musical skills and build knowledge, as well as helping individuals build social connections and friendship groups. They create an environment for people from all walks of life to come together and enjoy mutual support, targeting men, particularly those aged 50 plus, where loneliness is at its highest, but open to all, and participants have reported impressive results.

9.4 The Library Service provides an equipment loaning scheme for vulnerable and/or isolated residents who do not have access to IT equipment in the home called *Connecting Merton*. The scheme not only provides good quality IT equipment such as laptops and tablets but advice, guidance and training on how to get the equipment set up and how to get online in a safe way. Library staff and volunteers support residents by providing training either in person or via the telephone. Participants are also linked into a range of free IT learning courses provided by Merton Adult Learning and other providers. So far over 200 residents have joined the scheme with 100% of residents reporting improvements in their IT skills.

9.5 Libraries provide a range of employability support services working with training providers. Examples include CV writing workshops, job clubs and other skills

training. The use of library services is integral for a number of community based courses and in a more informal way through sessions such as one to one IT support and other activities delivered by partners and volunteers. They are also developing more services to support with the cost of living including new money management courses provided by Barclays.

9.6 Wimbledon Library hosts 'Wimbletech', an organisation that provides space, advice and support for start-up companies and co-workers and is part of Merton's Inward Investment Strategy. Building on the success of Wimbletech, the Workary at Mitcham Library launched in April 2022, and will play a vital role in supporting entrepreneurs and start-up businesses in the east of the borough.

To address branch closures Mitcham, Colliers Wood and Pollards Hill libraries also host a new community banking service. Apart from the usual banking services the service also provides money management and digital skills training

9.7 Health and Wellbeing Zones have been established in all our libraries. Residents are now able to undertake health checks and use digital equipment to improve their personal health and wellbeing. The project links in closely with the Health on the High Street initiative.

Adult Learning

9.8 Merton Adult Learning provides vital training and support to improve the life chances of our residents. The London Borough of Merton is committed to providing high quality and sustainable adult learning in order to improve the social, economic, health and wellbeing of our residents. This is delivered through a strategic investment approach: commissioning provision to the best providers in the field and by developing sophisticated evidence based approaches to what we deliver. It is focussed on reducing inequalities across the borough by focussing a significant proportion of its investment on those most socially and / or economically disadvantaged whilst providing a broad range of learning opportunities to develop all resident's skills

Mitcham Health and Wellbeing hub

9.9 Supported by the council, the NHS is leading a programme with health and care partners to develop a new health and wellbeing hub to serve the people of Mitcham and the surrounding areas. The hub will support people to stay healthy and stop health conditions getting worse, through prevention work – because this is one of the most important ways we're able to tackle health inequalities. It will be home to a range of integrated services, complementing and enhancing existing ones, including: wellbeing services, social prescribing, children's services, children and young people's mental health services and adult mental health services, subject to confirmation. There will also be outside community space as part of its wellbeing offer and bookable rooms for community use and multi-disciplinary team working.

9.10 The work to develop the Mitcham health and wellbeing hub had to be paused in 2019 due to funding issues when the national LIFT (Local Improvement Finance

Trust) scheme came to an end. Enough potential funding, approximately £15m, has now been identified through the new NHS Property Services Disposal policy, along with investment from NHS South West London, to enable the project to move forward, and the draft Outline Business Case is expected to be ready this year. A recent options appraisal process considered the Wilson Hospital site, a site on Birches Close and the Sibthorpe Road car park. The site is not yet confirmed as the councils view on the Wilson site is that it has poor access and is poorly served to those in the most deprived wards in the east of the Borough due to its location.

Air Quality

9.11 Air quality is a fundamental determinant of health with many acute and chronic diseases and premature deaths linked to air pollution; often the least well off suffering most while polluting the least. Particularly affected are the most vulnerable, including the elderly, the young and those with underlying health conditions. That is why air quality is one of the priorities identified in Merton's Health and Wellbeing Strategy and it is a key part of Merton's Climate Strategy and Action Plan

9.12 Actions taken to tackle air pollution are outlined in the Council's Air Quality Action Plan and reported annually as part of an Annual Status Report. Notable successes include the Borough's School Streets Programme that now covers 29 schools, the highest number of any London borough. Anti-idling initiatives aimed at key hotspots in the borough and raising awareness in schools and businesses, including a Public Health funded Behavioural Insights, currently being delivered, and using active signage to change driver behaviour.

9.13 As part of a grant funded project, we have increased air quality monitoring in the borough, with 68 new Breathe London Monitors to provide a better picture on pollutants of health concern and help inform policy and decision making. The Air Quality Team continue to deliver the world first Construction Low Emission Zone in London on behalf of the Mayor of London and London Councils. This project is ensuring that sites in London use less pollution plant and equipment and improve health outcomes for Londoners.

9.14 Merton is also leading on a project to link the air quality agenda with health professionals, to review the air quality health alert systems for the most vulnerable, so that active steps can be taken to ensure lifestyle and medical needs can be considered better for those exposed to local pollution.

9.15 Partnership working with the NHS on air quality and sustainability has developed since the NHS committed to an ambition to become carbon neutral, that requires all NHS organisations to produce 'Green Plans'. One example of this work is that the Council commissioned a programme through the Chamber of Commerce to support GP practices to accredit around the RCGP's Green Impact for Health Toolkit and Active Practice Charter, leading to two practices accrediting under these standards.

Fuel Poverty in Merton

9.16 Living in a cold home has both direct and indirect physical and mental health impacts, such as asthma and depression, as well as wider social impacts, such as poor educational attainment in children^{9,10}. Population groups that are most vulnerable to the impacts of cold housing include those on a low-income, with cardiovascular conditions, respiratory conditions, older people, people living with pre-existing conditions and young children^{10,11}.

9.17 The proportion of fuel poor households in Merton in 2020 was 10.5%, more than our neighbouring boroughs of Wandsworth (8.6%), Kingston upon Thames (9.3%) and Sutton (9.8%) but less than Croydon (12.8%)¹². Please note these figures should be interpreted with caution and may be affected due to changes in methodology and sampling method over the COVID-19 pandemic (for 2019, this figure for Merton was 14.7%)¹³.

9.18 Households experiencing fuel poverty (and therefore likely experiencing other types of poverty), are targeted by the Council's local services, such as Warm and Well, as well as through our engagement with national programmes, such as the Green Homes Grants Local Authority Delivery schemes. Monthly Fuel-Poverty Sub-group meetings take place between Merton Council and key voluntary sector partners in the borough to ensure effective communication and coordination. Public facing events, led by the voluntary and community sector, also take place across the borough to disseminate key information and promote services to help those experiencing fuel poverty.

'Warm and Well' in Merton

9.19 Funded by Merton Council Adult Social Care, Warm and Well is a local service in a partnership with Wimbledon Guild, Age UK Merton and Thinking Works. The service targets older adults in Merton, many of whom are on a low-income and in receipt of other benefits and provides:

- Information and advice on keeping well for vulnerable residents in winter and summer, as well as a wider 'wrap-around' service including advice on benefits, accessing and providing small grants, transport and housing for older people.

⁹ Public Health England. Data sources to support local services tackling health risks of cold homes. Available at: https://assets.publishing.service.gov.uk/government/uploads/system/uploads/attachment_data/file/770963/data_sources_to_support_local_services_tackling_health_risks_of_cold_homes.pdf Accessed [24th June 2021]

¹⁰ Public Health England. Local action on health inequalities: fuel poverty and cold home-related health problems. PHE. Available at: https://assets.publishing.service.gov.uk/government/uploads/system/uploads/attachment_data/file/357409/Review7_Fuel_poverty_health_inequalities.pdf, Accessed [29th June 2021]

¹¹ National Institute for Health and Care Excellence. Excess winter deaths and illness and the health risks associated with cold homes. Available at: <https://www.nice.org.uk/guidance/ng6/chapter/What-is-this-guideline-about> . Accessed [24th June 2021]

¹² GOV UK, Fuel Poverty Sub-Regional Statistics, UK Government, Available at: <https://www.gov.uk/government/collections/fuel-poverty-sub-regional-statistics>, Accessed [25th May 2022]

¹³ GOV UK. Fuel poverty detailed tables 2021. Available at: <https://www.gov.uk/government/statistics/fuel-poverty-detailed-tables-2021>. Accessed [24th June 2021]

- Funds for 300 energy assessments through Thinking Works, who offer advice on energy saving and grant applications.
- A free handyman service which supports vulnerable residents with small home improvements.

9.21 Warm and Well effectively raises awareness of fuel poverty and the wider support available as well as directly assisting vulnerable residents in the borough through providing talks, winter packs, advice and grants, where possible.

Green Homes Grants

9.22 There are a number of schemes being delivered by partners around housing retrofit and energy efficiency, including the national Green Homes Grant and Sustainable Warmth, which aim to provide grants to eligible households to retrofit properties to raise their energy efficiency, reduce carbon emissions and reduce fuel poverty. The programmes target low-income households with the lowest Energy Performance Certificate to provide grants to some of the most vulnerable households. Merton's Public Health and Climate Change teams have been working hard with the GLA, regional and local partners to help promote these schemes locally. Work completed to date includes:

- Merton residents have been referred to the regional support programme via our local energy advice service, Thinking Works. The Climate Change team have secured carbon offset funds to top up this funding where appropriate.
- A communications plan submitted for Sustainable Warmth for Merton to the GLA (awaiting feedback) planned to include a mail-out to potentially eligible households and social media advertising to promote the scheme to local residents.

9.23 The retrofitting of households will help raise their energy efficiency and improve the quality of housing in the long-term, reduce energy bills and help to deliver Merton's commitment of becoming a net-zero carbon borough by 2050. As these schemes continue to develop, we will work to understand their impact and make best use of all opportunities to retrofit.

10. SAFETY AND WELLBEING

The Merton Partnership Violence Reduction Plan

10.1 During the 12 months between April 2021 and March 2022 there were a total of 13,315 crimes reported as taking place in Merton. This equates to a rate of 63.2 crimes per 1000 person. This was the third lowest crime rate of all 32 London boroughs. The two boroughs with lower crime rates were: Bexley and Richmond Upon Thames.

10.2 The Merton Violence Reduction Plan is developed in partnership to ensure that the borough has a range of up-to-date actions focused on reducing violence (including knife crime) and vulnerability. The plan is overseen by the Merton Safer

and Stronger Executive Board (SSEB) and is reviewed on a regular basis by the Mayor's Office for Policing and Crime Violence Reduction Unit (MOPAC). The most recent review of the plan in April 2022 found that Merton has 'a good plan. Examples of ongoing work linked to the Merton partnership Violence Reduction Plan include:

- The 'Towards Employment' project, engaging young people at risk of offending or who have offended. It has also been successful in securing funding to continue its work.
- Young victims of violence provided with a trauma informed needs assessment, with therapeutic support in place, and an early trauma referral pathway currently being developed by Child and Adolescent Mental Health Services Board.
- Test purchases (checks carried out by Trading Standards or the Police to see if premises comply with the law in respect of age restricted products) with children and Challenge 25 with young people 18-25 in retail premises and/or online (dependent on securing suitable volunteers - challenging during the COVID-19 pandemic).
- Multi-agency panels seek to ensure that vulnerable adults are supported and encourage referrals from a wide range of partner agencies. Close links are in place with the police adult social care and other partner agencies.

Specific Projects delivered in 2021/22 include:

10.3 Crimestoppers Fearless Campaign - Merton secured funding for a campaign, aimed at 11–16-year-olds, raising awareness on safety issues and how to report crime – including the option to report anonymously via CrimeStoppers. It is estimated that 95% of people making reports to CrimeStoppers would otherwise not have reported the incident to police. During the project 20 young people attended a workshop on knife crime, 36 practitioners attended professional training sessions and the social media campaign achieved a reach of over 45,000.

10.4 St Giles Project - In October 2021 the Safer Merton Team secured £62,500 for work to support vulnerable children in schools to reduce the risk of child criminal exploitation and violence. This work is being delivered by the St Giles Trust SOS+ preventative project engaging with young people in several schools across the borough through a combination of whole year assemblies, focused group work and one to one support and mentoring.

10.5 Phipps Bridge Contextual Safeguarding Project Evaluation - to reduce violent crime, anti-social behaviour and facilitate safeguarding on the estate, engaging with community, providing reassurance and early interventions. The Safer Merton team is currently working with partners to carry out an assessment of the impact of the work and identify any areas for ongoing focus.

Domestic Violence

10.6 Safer Merton continues to co-ordinate the partnership approach to respond to violence against women and girls (VAWG) as part of its core business and a priority

for the partnership Safer and Stronger Executive Board. Interventions and activities include:

- Management of the VAWG Strategic Board and developing a new VAWG strategy, due to be launched in September 2022, with an increased focus on the safety of women and girls in public spaces and the importance of male accountability for ending violence against women and girls.
- Developing and delivering the annual VAWG action plan and ensuring we meet the policy and statutory requirements, specifically conducting Domestic Homicide Reviews.
- Commissioning and managing front-line services for victims of domestic abuse, including: The Independent Domestic Violence Advocacy Service (IDVA); running the virtual weekly One Stop Shop drop-in surgeries; joint commissioning of the complex needs IDVA service and refuge; and the Refuge provision – 17 beds provided through Hestia.

10.7 In March 2022 Merton Council signed up to the Mayor's Night Safety Charter (as a statement of the Council's commitment to improving the safety of women and girls and in light of the range of measures being implemented). Additional work to be delivered during 2022/23 includes:

- Investing in extra capacity for street pastors to be trained and deployed to busy night-time economy locations; and targeted training and support for night-time economy staff, via a roving Welfare Licensing Officers to check premises are promoting welfare and safety inside their premises.
- The Task Group will lead on coordinating the work required for Merton Council to achieve White Ribbon accreditation status. White Ribbon UK is a charity focused on engaging with men and boys to end violence against women and girls.

10.8 The Safety of Women and Girls Task Group will work to develop a clear understanding of the applicability and appropriate role for restorative justice processes. The Safer Merton Team has submitted a joint bid to the Home Office's Safer Streets funding for work to help prevent violence against women and girls in public places and engage with men to change attitudes and behaviours.

Safeguarding Children in Merton

10.9 The Merton Safeguarding Children Partnership (MSCP) brings together partners to safeguard and promote the welfare of children in Merton, and partners are committed to working together so that every child in Merton is safe, well and able to reach their full potential. The MSCP is focused on the following four priority areas, as set out in the MSCP 21-23 Business Plan:

- **Early Help and Neglect** – ensuring Early Help is part of a whole system approach and based on a clear understanding of local need. Good early help will mean that children and their families will experience a high quality and coordinated service that meets their assessed needs and prevents issues from escalating into a safeguarding risk. Ensuring the MSCP provides a

strategic and operational framework to improve the identification of early signs of neglect.

- **Contextual Safeguarding** – ensuring as partners we are proactively addressing risks that occur in contexts beyond the family home (e.g. neighbourhood, schools, local shopping centres, youth venues). These risks could include child criminal exploitation, child sexual exploitation, serious youth violence, peer on peer abuse, harmful sexual behaviour and other overlapping forms of harm.
- **Domestic Abuse and Think Family** – monitoring, coordinating and evaluating the work of partner agencies to safeguard children who are at risk of, or witnessing, domestic abuse. Working effectively with families, including victims and perpetrators of abuse to create and sustain a safe parenting environment.
- **Strong Leadership & Strong Partnership** – leading an impactful safeguarding agenda, challenging the safeguarding work of partners and committing to an approach that learns lessons, embeds good practice and is continually influenced by children, young people and their families.

10.10 The MSCP also oversees the development of multi-agency policies and procedures and delivers a comprehensive training programme for the multi-agency workforce, overseen by the Policy and Training sub-group. During 21-22, the MSCP delivered training to over 700 practitioners working with children and families in Merton, and we continue to commission new training topics to respond to emerging needs.

10.11 The MSCP is also committed to an approach that learns lessons and the Quality Assurance and Practice Review sub-group oversee a regular audit programme to test the quality of our safeguarding processes in Merton. The MSCP also oversees the delivery of Rapid Reviews and Local Child Safeguarding Practice Reviews, as per Working Together 2018 statutory guidance, to ensure that partners learn from serious incidents involving children living in Merton.

10.12 The MSCP is chaired by an Independent Person, Aileen Buckton, who scrutinises the senior leadership of partners in the MSCP. The MSCP also work with an Independent Scrutineer and Young Scrutineer, who undertake a programme of thematic scrutiny to provide reassurance of the effectiveness of the MSCP's work. They recently reported on their thematic scrutiny reviewing how effective the MSCP is in responding to sexual harassment in schools, following the national concerns raised in Everyone's Invited. They are planning further scrutiny this year on 'Adultification', in response to the recent concerns raised by Child Q's story, and on family networks in assessments, in response to Merton's local Ananthi review.

Safeguarding Adults in Merton

10.13 As part of the work of the multi-agency Merton Safeguarding Adults Board, partners across the borough are working to ensure that adults at risk can live life free from abuse, neglect, and exploitation. The Board's priorities for 2021-2024 are:

- Prevention and Early Detection: Aim - adults from all communities will feel supported to keep safe. Partners, service users and residents will recognise risk and be confident in their response.
- Building and strengthening connections: Aim - partners, service users and residents from all communities are engaged and working together to ensure an inclusive safeguarding framework.
- Making Safeguarding Personal: Aim - people will feel listened to and have a real choice and control in shaping their safeguarding journey.
- Quality Assurance & Embedding Learning: Aim- to establish a Quality Assurance & Performance Framework to provide assurance that the Board and its partner agencies have effective systems, structures, processes and practices in place. To learn from reviews, for example SAR's, Domestic Homicide Reviews (DHR's) and Learning Disability Mortality Reviews (LeDeR) and ensure mechanisms are in place to measure effectiveness.

10.14 Annual priorities are currently being agreed and are planned to include carers support, transitions and support for young adults, low level mental health needs and dual diagnosis (co-existing mental health and substance misuse needs) and Fire Safety. One area of focus is to understand lived experience from stakeholders, residents and service users to inform the emerging service model, and procurement of the adults' substance misuse service. Regular audits are undertaken of the Safeguarding Adult Enquiries where cases are identified for a potential 'Discovery Interview' allowing the person who has experienced the safeguarding process to feedback their experiences to the interviewer on what went well and what could be improved.

10.15 The Board's Communication and Engagement Subgroup are working with Merton Connected on a model of Safeguarding Adults Champions similar to existing Community Champions. Champions will be the vehicle for raising awareness of adult safeguarding in the community and amongst residents, as well as informing the board of gaps and emerging issues.

10.16 The Board's Learning and Development Subgroup has secured a Safeguarding Adult Training package that will be accessible via the Merton Safeguarding Adults Board Website. The website will allow reporting on how the training is used as well as providing feedback on where we need to focus our support in the future.

10.17 Work to support people with a Learning Disability continues via monitoring the Learning Disability Mortality Reviews and Learning Disability Health Checks. Regular reporting via the Performance and Quality Subgroup, provides a mechanism for scrutiny as well as informing actions for improvements for the partnership. The Board has agreed to further develop data sets and assurance tools, including an assurance framework, which can inform emerging themes and priorities. Sharing the right information, at the right time, with the right people, is fundamental to good practice in safeguarding adults.

Health protection

10.18 Health protection seeks to prevent or reduce the harm caused by communicable diseases, as well as environmental hazards such as chemicals and radiation. Nationally, the UK Health Security Agency (UKHSA) has responsibility to deliver a specialist health protection response and the regional Health Protection team for South London covers Merton.

10.19 Local authorities have had a statutory duty, since April 2013, to provide oversight to ensure that health protection arrangements are robust. Local, regional and national roles need to be complementary to ensure an effective response, and Merton Public Health have an active Health Protection Oversight Group and protocol that discharges this responsibility. In addition Directors of Public Health have a wider health protection role in supporting UKHSA with the management of outbreaks and incidents within their local area. The Health Protection functions covered by the Health Protection Oversight Group include:

- Immunisations
- Antenatal and new-born screening
- Cancer screening
- Infection control and healthcare acquired infections
- Emergency planning and resilience
- Infectious disease outbreaks
- Cold and hot weather planning
- Chemical and environmental hazards

10.20 Most recently the focus for health protection has been on COVID-19, with local authorities taking an important role in the pandemic response - including community engagement, supporting settings such as care homes and schools, delivering local asymptomatic testing and local contact tracing – linking to the London Coronavirus Response Cell and the UK Health Security Agency at a national level.

10.21 The impact of COVID-19 means that some health protection programmes are now working to ‘catch-up’ and improve their performance e.g. cancer screening and some adult and children’s immunisations. Merton Council has an oversight function for this and takes a partnership approach to working with NHS England and Improvement to support improvement. This includes using our established network of Community Champions, set up as part of our COVID-19 response and still meeting regularly, and our strong partnerships with voluntary and community sector, to raise awareness of screening and immunisations programmes in Merton.

11 Healthier Communities and Older People Overview and Scrutiny Panel

11.1 Over the last year the Healthier Communities and Older People Overview and Scrutiny Panel has looked at health inequalities through several work streams, Panel members monitored the impact of the pandemic and uptake of the vaccine for vulnerable groups. There are plans for a new Health and Wellbeing Hub in East

Merton, this panel has expressed concerns about the delay and highlighted the need for GP Services within the vicinity.

12. CONSULTATION UNDERTAKEN OR PROPOSED

Ongoing consultation and engagement has taken place as set out in this report.

13. FINANCIAL, RESOURCE AND PROPERTY IMPLICATIONS

There are no direct financial implications arising from this report.

14. LEGAL AND STATUTORY IMPLICATIONS

Any legal or statutory implications are addressed in the report and for the purposes of this report there are no further comment.

15. HUMAN RIGHTS, EQUALITIES AND COMMUNITY COHESION IMPLICATIONS

Health equity is a key focus of Merton Health and Wellbeing Strategy and is integral to the work set out in this report.

16. CRIME AND DISORDER IMPLICATIONS

None for the purposes of this report.

17. RISK MANAGEMENT AND HEALTH AND SAFETY IMPLICATIONS

None for the purposes of this report.

18. BACKGROUND PAPERS

[Merton Health and Wellbeing Strategy 2019-2024](#)

[Merton Local Health and Care Plan summary 2022-24](#)

[Merton Story 2021](#)

Agenda Item 8

MITCHAM COMMUNITY FORUM
22 FEBRUARY 2022

(7.15 pm - 9.00 pm)

PRESENT Councillors Councillor David Chung (in the Chair),

1 WELCOME AND INTRODUCTIONS (Agenda Item 1)

The meeting was held via Zoom and chaired by Councillor David Chung and Councillor Joan Henry. Two residents and three councillors attended on Zoom with 94 additional views on YouTube. The Chair welcomed everyone to the meeting and explained how the meeting would work.

2 COMMONSIDE TRUST UPDATE (Agenda Item 2)

Naomi Martin, Chief Executive of Commonside Trust gave a presentation on activities at the New Horizon Centre. The presentation is attached to this report. Naomi set out the activities currently taking place at the centre:

1. Step Forward – practical support for families including welfare, benefits, housing and a food bank. Outcomes include reduced isolation, maximised income and reducing inequalities
2. Lunch club for older people – the Trust delivered hot lunches throughout the pandemic and provides food supplies, exercise and activities. Naomi said they plan to develop a 'Living life to the full' Hub
3. Kicks – youth football supported by the Metropolitan Police
4. Lockdown film project – working local young people and professional actors
5. Polish Family Association is now based at the New Horizon Centre providing support on EU Settled Status, and food supplies

In-person activities at the Centre are beginning again and rooms are available to hire. Details can be found on their [website](#), or you can email [Naomi](#).

Councillor Henry asked about the foodbank moving to the Baptist Church. Naomi said there are number of different sources of food now operating with the Baptist Church open on Wednesday and Friday. The New Horizon works with the Community Fridge to deliver fresh food and host cooking session. There is also fresh food available from St Michaels Catholic Church on Friday mornings.

Cllr Henry asked if the Ghanaian Saturday lunch club is returning. Naomi said not yet but will be looking at other options

3 WARM AND WELL PROJECT (Agenda Item 3)

Olivia McKay, Winter Warmth Engagement Officer for Wimbledon Guild, gave an update on the [Warm and Well Project](#). The project started in 2019 and is a partnership between Merton Council, Age UK Merton and Thinking Works.

Thinking Works is a free service in operating across five south west London boroughs that provides home energy assessments and assess eligibility for additional utility support. Thinking Works also provide a starter pack to residents that can help improve water and energy efficiency. Wimbledon Guild provides also provides referrals to Thinking Works for fuel vouchers. To be eligible you must be a Merton resident, and either over 65, have a long-term health condition or be on a low income.

Wimbledon Guild also provide a handy person service, a free service for small jobs that do not need technical qualifications.

The Warm and Well project also provides outreach to share information and can refer to other Guild services.

For more information, please email Olivia omckay@wimbledonguild.co.uk

Cllr Akyigyina asked what publicity is provided to promote the project. Olivia said that she distributes promotional materials and attends outreach sessions.

Naomi Martin said that the New Horizon Centre is hosting a fuel saving day on 30 April in conjunction with Thinking Works.

4 CANONS UPDATE (Agenda Item 4)

Amy Keen, Community Engagement Officer from Merton Council, gave a presentation on the Canons Heritage Project. The presentation is attached to this report.

This is the final year of the project as funding runs out in December 2022. Improvements to Canons House include new windows; smarter interior; a new terrace; a new community room to be let by a workspace operator; and repairs and restoration to the Blue Room. The Dovecote has also been restored and is no longer on English Heritage's 'At Risk Register'. The Dovecote is now open and safe to visit. There is a new entrance to the site that incorporates the Obelisk. A new plaque celebrates the contribution of the Mitcham community.

In the grounds the running track has been re-instated, and a new interpretation space will explore the heritage of the track. In the pond silt has been removed, and

wildflower meadows installed. There is a new community garden by the car park with volunteers involved in creating the space. A new play area was designed with Mitcham school children. Amy said she is still looking to make the surface and planting more robust. In the walled garden the surface has been repaired and the urn relocated.

Amy said that an attempt to let the café in 2021 was impacted by COVID-19, instead the plan is to have an interim arrangement for this summer so refreshments and toilets will be accessible. It was difficult to hold many events in 2021 but Amy hoped to be able to announce a schedule of events for spring and summer 2022 shortly. You can keep up to date by signing up for the [newsletter](#).

Naomi asked if frogs and newts had been found in the pond and Cllr Henry asked if there were any fish. Amy said there were no frogs yet but ducks have returned. There are no plans to introduce fish. Naomi asked if it would possible to use the site for a lunch club picnic and Amy said that would be great she would be in touch to discuss further.

Cllr Chung asked about the accessibility of the site and if disabled residents would be encouraged to use the site. Amy said that the house and grounds are accessible, and Amy would be happy to speak with any relevant groups to encourage use.

5 COMMUNITY FORUM REVIEW (Agenda Item 5)

Kris Witherington, Engagement and Consultation Manager at Merton Council, gave a presentation on the review of the Community Forum meetings currently taking place. The presentation is attached to this report.

Merton Council is asking residents to provide feedback on their experience of the community forums, what they think works, and what they think could be improved. Kris has looked at what other types of engagement is taking place across London and ran through seven other models for engaging with residents.

Cllr Akyigyina asked about returning to face to face meetings or hybrid meetings. Kris said that currently the council policy is that non-decision meetings are still be remote but that should be reviewed. The hope would be return to face-to-face meetings and have online access by the autumn meeting.

Cllr Chung said some of the other models seemed quite complex. Kris he said he had simplified this for the survey. Any changes would be part of a wider context for how the council engages with residents.

6 OPEN FORUM (Agenda Item 6)

James McGinlay, Head of Regeneration at Merton Council had provided an update on the Rowan Park development. Final plans for community facility and health centre have been agreed and are currently going through the final sign off by the developer's partner, CSM, and the Clinical Commissioning Group. James hopes to be able to provide a start date soon.

A resident asked if it was possible to create dedicated parking bays next to the on-street electric car charging points. AFTER THE MEETING: The Highways team said that we have had some complaints about residents not being able to access EV charging points, so we are looking to retrofit dedicated bays adjacent to some of the chargers, subject to the statutory consultation process. Residents can email Electric.Vehicles@merton.gov.uk to request a dedicated EV bay adjacent to an existing lamp column charger.

Cllr Henry asked about the plans for Mitcham Carnival. Kris said that colleagues were planning for this summer and have been asking residents to feedback through a survey.

A resident asked if when the final works to the Mitcham bridge would be completed with boundary marker, fencing and tree planting. AFTER THE MEETING the following update was provided. The parish boundary marker sign is being cleaned and refurbished and will be reattached to the bridge in May/June. Some trees have been planted but more will follow.

Cllr Chung said that we had asked for the NHS to provide an update on the Wilson and the Mitcham wellbeing-hub as this project is essential for reducing inequalities, but they were not able to attend.

Councillor Henry thanked residents for attending and closed the meeting.

7 DATE OF NEXT MEETING (Agenda Item 7)

Thursday 6 October 2022 at 7.15pm, venue to be confirmed

Commonside Community Development Trust

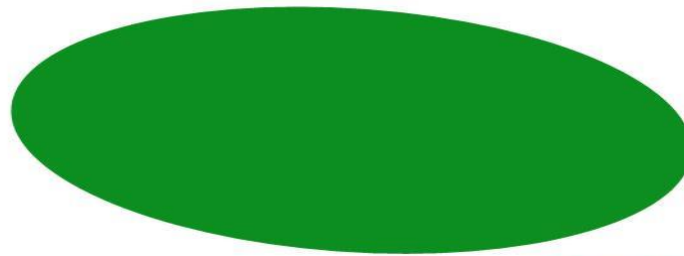
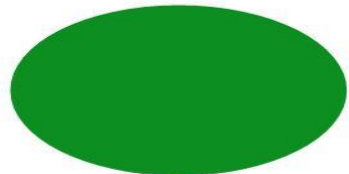


Page 45

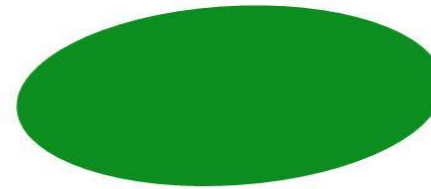
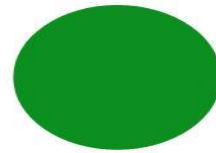


Minute Item 2

Step



Forward



Commonside's Parents Programme for Families in Merton

Praggers

Practical support for families with children and adults –

- ▶ Welfare, benefits and housing advice
- ▶ Emergency food support (Community Fridge Network, Wimbledon Foodbank, others)
- ▶ April 2020 – around 100 food parcels per week
- ▶ December 2021 – around 50 food parcels per week



Step Forward

Commonside's Parents Programme for Families in Merton

- ▶ Outcomes for individuals:
 - ▶ Reduced loneliness and isolation
 - ▶ Maximised income
 - ▶ Housing inadequacies improved
 - ▶ Health inequalities lessened
 - ▶ Immigration status more clearly resolved
 - ▶ Domestic abuse stopped and safety in the home raised
 - ▶
- ▶ **Outcomes for the Community:**
More cohesive, safer, with a sense of pride in the local area

The Lunch Club for older people – an essential service in 2020 and 2021-22

Hot lunches cooked from fresh ingredients daily
Monday – Friday for between 12 – and 15 older people

A few additional clients added to the lunch list - referrals from the *Community Response Hub*

New clients who opted in, and then out again, of the lunch delivery service

Food supplies, newsletter, doorstep welfare checks

Pollards Hill Luncheon Club & services for older people

▶ A 'Living Life to the Full' hub:

- ❖ An attractive hub for any adult member of the local population to volunteer – once/for just an hour/for longer/regularly – flexibly
- ❖ A place where as a volunteer, you can share your interests and enthusiasm with others
- ❖ A place where older people enjoy learning, exercising, laughing, chatting
- ❖ Safe, safeguarded, supported for all.

A place of choice



Things you didn't know we did!


File Edit View History Bookmarks Tools Help

Pollard Pass With Fulham Kicks: x
PLAYING

https://www.youtube.com/watch?v=PvaJlrm8G3vE

commonsids community development trust

Page 51



MET PREMIER LEAGUE KICKS CO-ORDINATOR

This what you are observing is a mix of Premier League KICKS

Pollard Pass With Fulham Kicks & Met Police.

2 views · Jan 11, 2022

DISLIKE SHARE SAVE ...

Commonsids Trust


Type here to search

File Edit View History Bookmarks Tools Help

Diners on The Wall - Keeping !! x
PLAYING

https://www.youtube.com/watch?v=4-Zzaa1fXmM&t=38s

commonsids community development trust



NEW HORIZON CENTRE

Diners on The Wall - Keeping the Community Together During 2020's Lockdown

46 views · Jun 1, 2021

DISLIKE SHARE SAVE ...

Type here to search



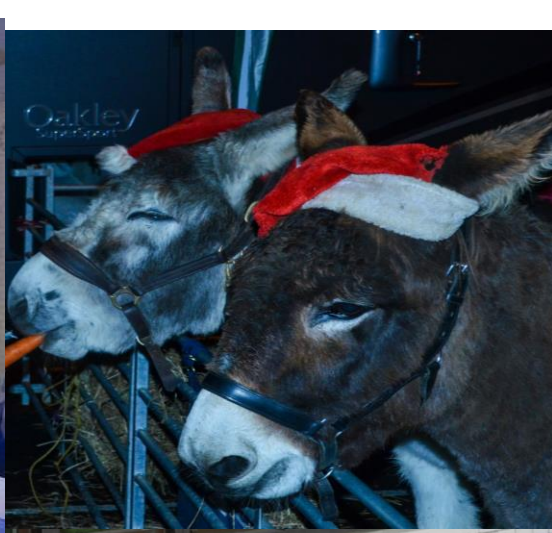
Polish Family Association at the New Horizon Centre

- ▶ EU Settled Status on behalf of the Home Office
- ▶ Over 1,200 people supported since the deadline (more before)
- ▶ 'late' applications are from those who are very, very vulnerable eg poor mental health and low IT literacy

- ▶ Food parcels once a week since April 2020
- ▶ Currently around 150 parcels per month
- ▶ Concerns about high carb emergency food and diet, levels of obesity and related health conditions as a result of pandemic



Pianificare la festa di comp del tuo bambino?





Robert Ingram



Kate White



Yosief Tewolde



Fitzroy



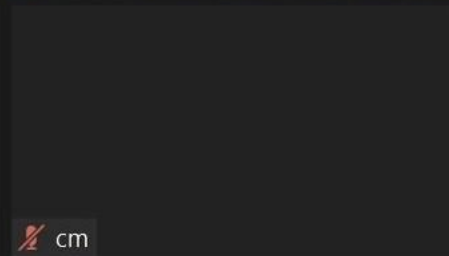
Moat Foundation - Jason Charles



Slawek Szczepanski, Polish Family ...



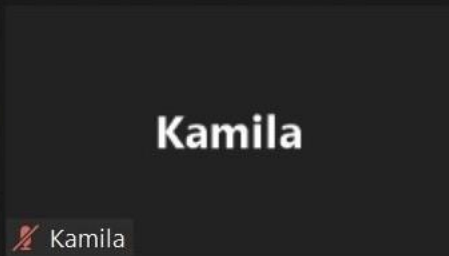
Philippa Leary



cm



mohansekeram



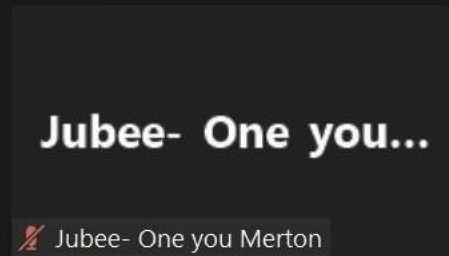
Kamila

Kamila



Jackie Chapma...

Jackie Chapman WCA Trustee



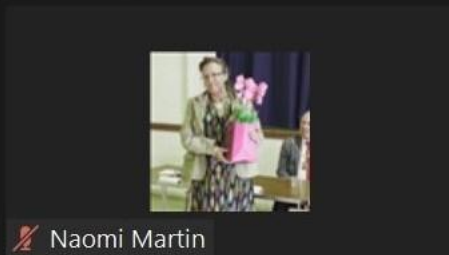
Jubee- One you...

Jubee- One you Merton



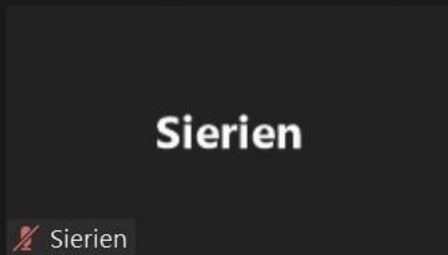
Susanne Ollig...

Susanne Ollig Wimblecomm Com...



Sierien

Naomi Martin



Sierien

Sierien



Mtonya

Mtonya



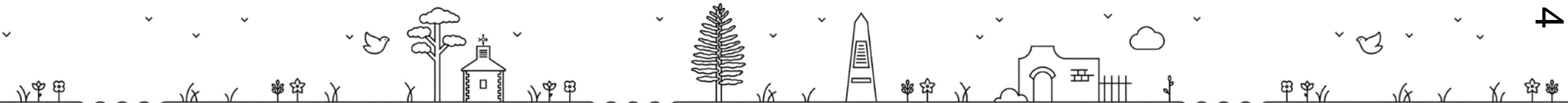




CANONS
HOUSE & GROUNDS

Mitcham Community Forum

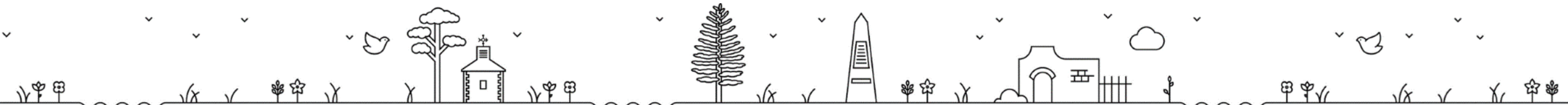
22nd February 2022



Overview

- Project team and National Lottery
- Canons House
- The grounds
- Letting the house and café
- Activities and events
- Get involved

Page 58

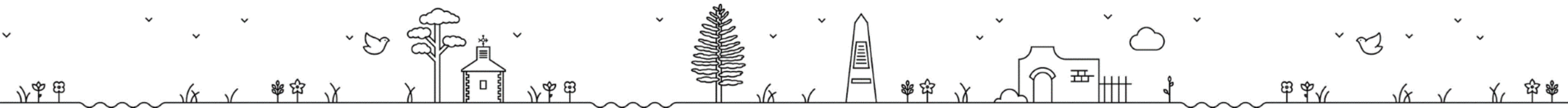


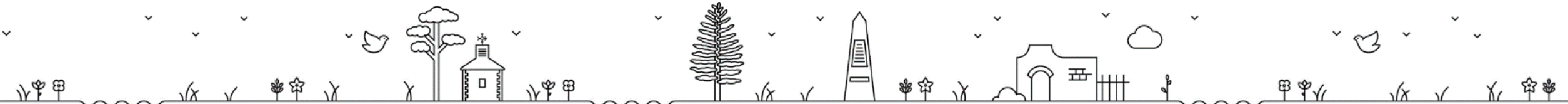
Project Team, Community Support and National Lottery

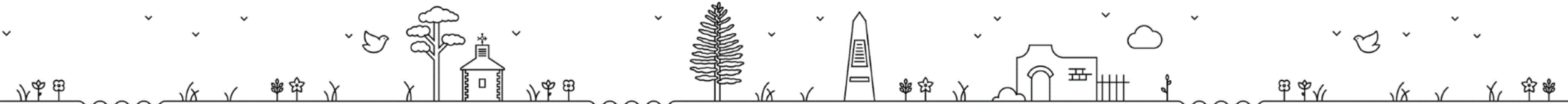


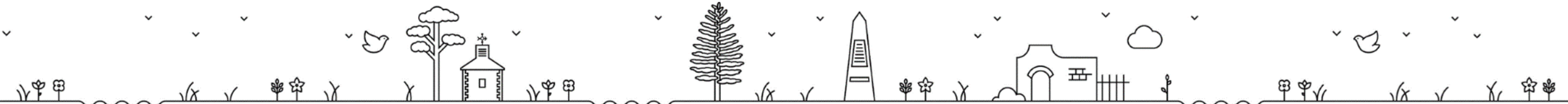
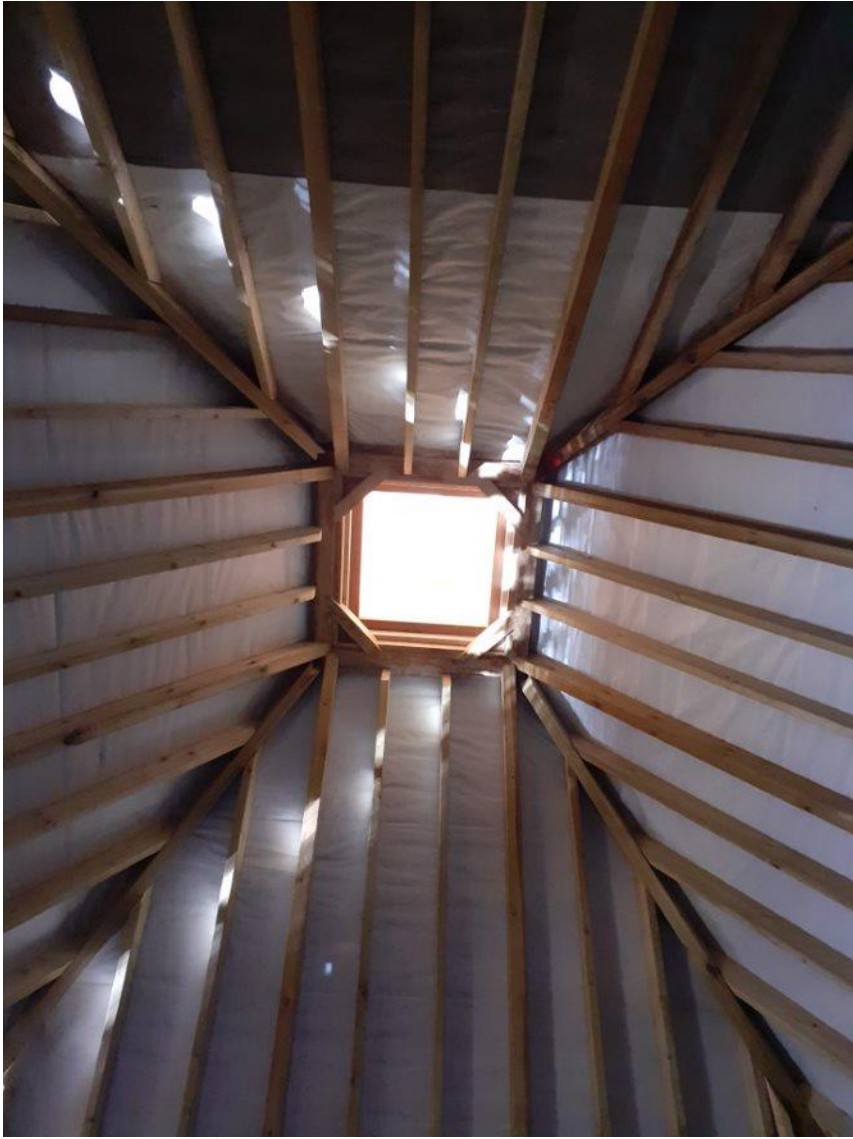
Canons House

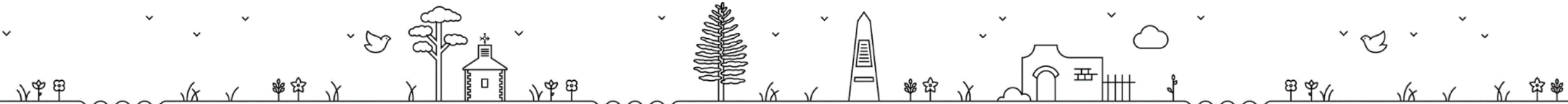
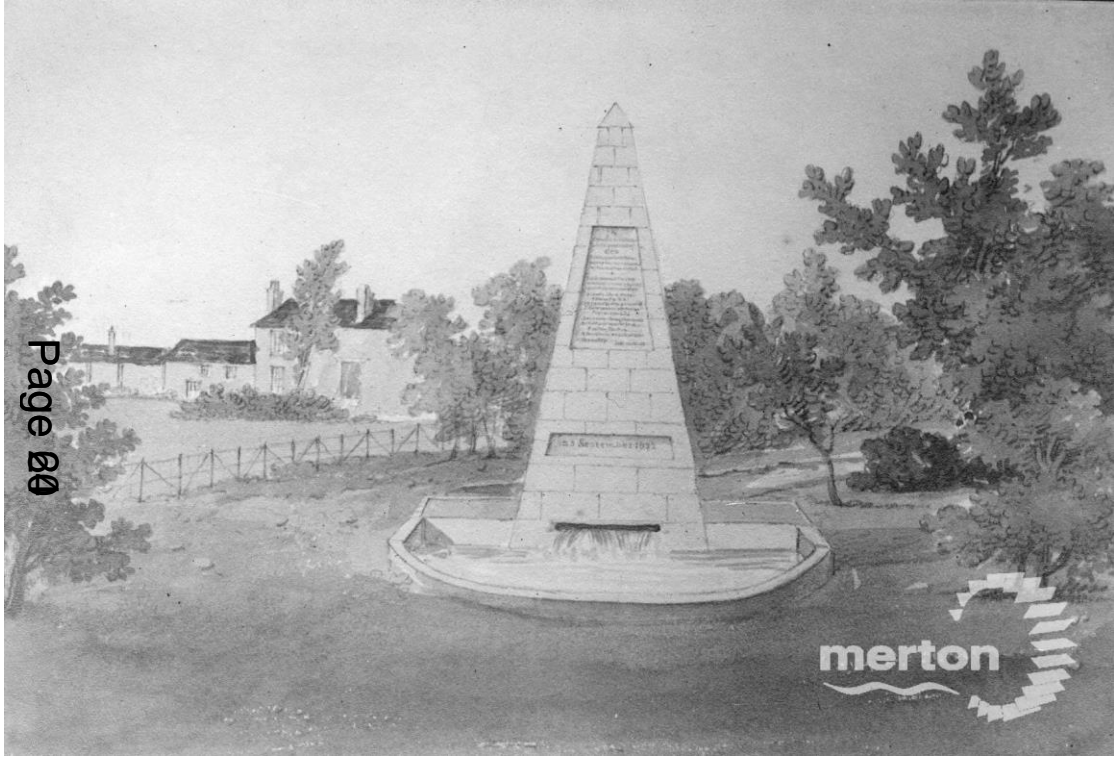
Page 00

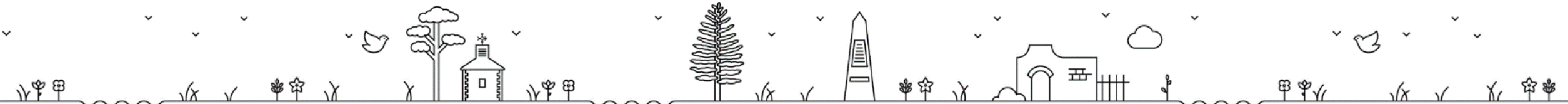






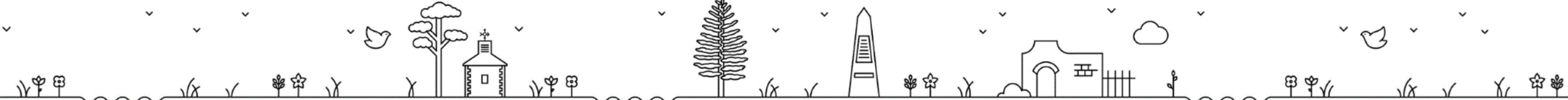


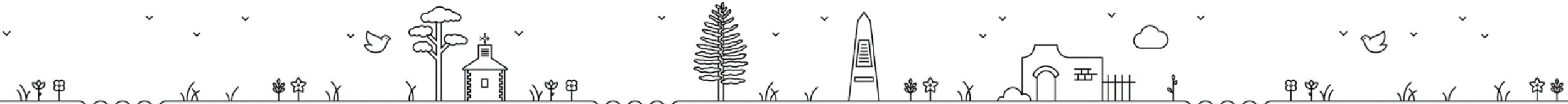


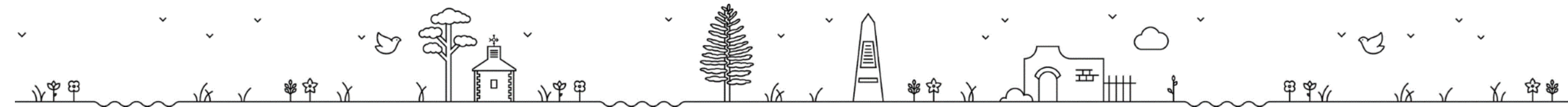


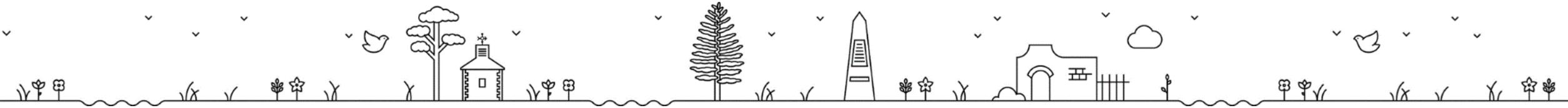
The Grounds

Page 08



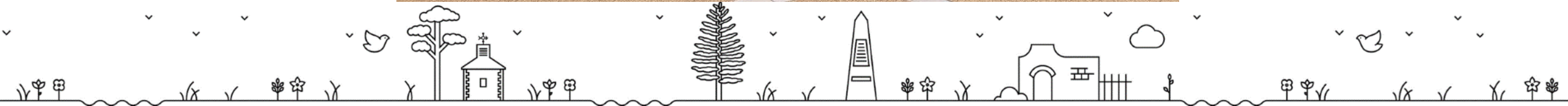






Letting the House and Café

Page 26



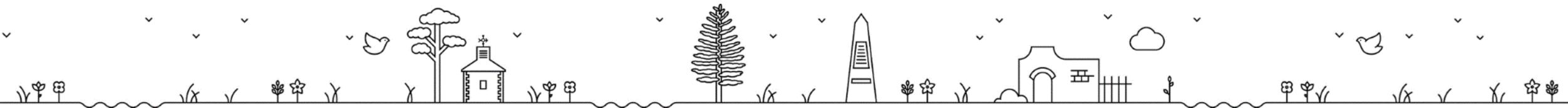
Activities and Events

Page 27



Get Involved

- Volunteer with us
- Come to activities and events
- info@thecanonsmitcham.co.uk
- www.thecanonsmitcham.co.uk
- Newsletter
- Instagram [canons_mitcham](https://www.instagram.com/canons_mitcham)



Community Forums

Your feedback 2022

Page 29

Why have a review?

- 10 years since last major changes
- Pandemic has introduced new technology options introduced
- Your Merton engagement showed desire for more engagement

What do we want to know?

- We want to know what you think works currently and what can be improved
- We want your views on different approaches
- We have looked at what other boroughs do to see what alternatives exist
- We found 8 different models in London, including those that are similar to Merton

Area Committees

- Formal committees of the council
- Councillors supported by co-opted residents associations or other groups
- Public meetings at which residents can speak
- Example - Sutton

Externally managed forums

- Networks or forums delivered by local organisations external to the Council
- Can involve existing residents groups
- Mix of public meetings and online discussion
- Example - Lambeth

Digital Panels and Boards

- Panels are representative group or residents who complete regular online surveys

Page 38
• Example – Kensington & Chelsea

- Discussion Boards are online discussion groups

- Example – Barking and Dagenham

Question time events

- Public meetings where elected councillors and officers can be questioned

Page 39
Can be either borough wide or locally focused

- Example – Mayor of London; Wandsworth

Citizen Assemblies

- Randomly selected group of residents discuss and recommend solutions to a particular issue
- Example - Newham

Councillor led structures

- Ward councillors organise and host local meetings in their ward

Example - Ealing

Have your say

- www.merton.gov.uk/consultations
- Complete the survey by 4 April
- Any questions or comments?

MORDEN COMMUNITY FORUM
23 FEBRUARY 2022

(7.15 pm - 9.00 pm)

PRESENT Councillors Councillor Nick Draper (in the Chair),

1 WELCOME AND INTRODUCTIONS (Agenda Item 1)

The meeting was held via Zoom and chaired by Councillor Nick Draper. Ten residents and five councillors attended on Zoom with 73 additional views on YouTube. The Chair welcomed everyone to the meeting and explained how the meeting would work.

2 WARM AND WELL PROJECT (Agenda Item 2)

Olivia McKay, Winter Warmth Engagement Officer for Wimbledon Guild, gave an update on the [Warm and Well Project](#). The project started in 2019 and is a partnership between Merton Council, Age UK Merton and Thinking Works.

Thinking Works is a free service in operating across five south west London boroughs that provides home energy assessments and assess eligibility for additional utility support. Thinking Works also provide a starter pack to residents that can help improve water and energy efficiency. Wimbledon Guild provides also provides referrals to Thinking Works for fuel vouchers. To be eligible you must be a Merton resident, and either over 65, have a long-term health condition or on a low income.

Wimbledon Guild also provide a handy person service, a free service for older people or those with long term health conditions, to do those small jobs that do not need technical qualifications and excludes gardening or decorating.

The Warm and Well project also provides outreach to share information and can refer to other Guild services.

For more information, please email Olivia omckay@wimbledonguild.co.uk

Cllr Kenny has been sharing information and asked how many residents have approached the service. Olivia said most referrals are self-referrals and when explained what is on offer, they often opt for an assessment.

Cllr Southgate asked if the handyman service included gardening. Olivia said it did not and would provide poster that explains the offer.

Cllr Gretton asked if the Handyman repairs fences. Olivia said they do not usually work on external areas but happy to have a look. Cllr Draper asked what help might be available to repair fences a resident asked why Merton do not collect as a bulky item. KW to check.

Cllr Pearce asked if Wimbledon Guild is in contact with other local groups. Olivia said she is currently reinitiating existing contacts.

3 COMMUNITY FORUM REVIEW (Agenda Item 3)

Kris Witherington, Engagement and Consultation Manager at Merton Council, gave a presentation on the review of the Community Forum meetings currently taking place. The presentation is attached to this report.

Merton Council is asking residents to provide feedback on their experience of the community forums, what they think works, and what they think could be improved. Kris has looked at what other types of engagement is taking place across London and ran through seven other models for engaging with residents.

Cllr Pearce said that previously Forums had been more resident led and have been taken over by digital groups like Nextdoor. Kris said that Merton Council joined Nextdoor in 2021 and have been promoting the forums on there but it has not yet resulted in new people attending the forum. Kris said that since going online there had been less interactivity as we got used to the format but hoped to see more once we were meeting in person again.

Cllr Southgate said that Morden is one of the less well supported and asked if the frequency might be a factor. Kris said the Colliers Wood is usually the worst attended and only meets annually, attendance and Mitcham and Morden is similar, and they meet biannually, whilst Raynes Park is the most consistently well attended at the quarterly meetings. Wimbledon attendance varies depending on the topics. This was the same before the number of meetings were changed. In some cases, low attendance can be explained by the success of local residents' associations.

A resident asked about having ward-based meetings. Cllr Draper said many wards do have meetings but not on a regular basis and often topic specific like planning or parking. Cllr Kenny said they host quarterly coffee mornings to listen to residents.

A resident asked about linking Section 106 funding to area forums. Cllr Kenny said that Ward Allocations and Neighbourhood Fund are based on resident feedback.

A resident suggested that the open forum should be the first item on the agenda but limit the length of contributions and that the meetings are too far apart.

Cllr McClean suggested that there is a case for annual get together for residents and resident association.

Cllr Draper asked about youth engagement. Kris said there is specialist engagement with young people through the Young Advisors, and Youth Parliament.

4 OPEN FORUM (Agenda Item 4)

A resident asked about the felling of trees to accommodate 5G masts and why wired comms were not being used instead. The Development Control team will be asked to respond.

Future Merton has recently updated the Morden Regeneration webpage at www.merton.gov.uk/moreMorden Cllr Pearce said residents are frustrated with the lack of progress.

A letter has been sent to residents in regard to solar panels under the Solar Together scheme. A resident said it would have been helpful to have a broad idea of costs. Kris will pass this on to the Climate Change officer.

A resident asked about progress on the Peel House car park works. Cllr Southgate said has been chasing. A survey was to be undertaken and then works will need to go to tender. Cllr Southgate has also asked for Kenley Road to be restored.

Councillor Draper thanked residents for attending and closed the meeting.

5 DATE OF NEXT MEETING (Agenda Item 5)

Wednesday 19 October 2022 at 7.15pm, venue to be confirmed.

This page is intentionally left blank

Community Forums

Your feedback 2022

Page 87

Why have a review?

- 10 years since last major changes
- Pandemic has introduced new technology options introduced
- Your Merton engagement showed desire for more engagement

What do we want to know?

- We want to know what you think works currently and what can be improved
- We want your views on different approaches
- We have looked at what other boroughs do to see what alternatives exist
- We found 8 different models in London, including those that are similar to Merton

Area Committees

- Formal committees of the council
- Councillors supported by co-opted residents associations or other groups
- Public meetings at which residents can speak
- Example - Sutton

Externally managed forums

- Networks or forums delivered by local organisations external to the Council
- Can involve existing residents groups
- Mix of public meetings and online discussion
- Example - Lambeth

Digital Panels and Boards

- Panels are representative group of residents who complete regular online surveys

Page 8
• Example – Kensington & Chelsea

- Discussion Boards are online discussion groups

- Example – Barking and Dagenham

Question time events

- Public meetings where elected councillors and officers can be questioned

Page 83
Can be either borough wide or locally focused

- Example – Mayor of London; Wandsworth

Citizen Assemblies

- Randomly selected group of residents discuss and recommend solutions to a particular issue
- Example - Newham

Councillor led structures

- Ward councillors organise and host local meetings in their ward

Page 95

Example - Ealing

Have your say

- www.merton.gov.uk/consultations
- Complete the survey by 4 April
- Any questions or comments?

RAYNES PARK COMMUNITY FORUM
22 MARCH 2022

(7.15 pm - 9.00 pm)

PRESENT Councillors Councillor Stephen Crowe (in the Chair),

1 WELCOME AND INTRODUCTIONS (Agenda Item 1)

The meeting was held via Zoom and chaired by Councillor Stephen Crowe with Tony Edwards from the Raynes Park Association (RPA). 16 residents and four councillors attended on Zoom with 132 additional views on YouTube. The Chair welcomed everyone to the meeting and explained how the meeting would work.

2 OPEN FORUM (Agenda Item 2)

A resident asked about safety, theft and anti-social behaviour in the area. They wanted to know if there were any plans for CCTV in the area or other responses. Cllr Adam Bush said that there have been two incidents in the last couple of months, one with a group of young people being arrested, the other involving theft. Cllr Bush has been in contact with the police, and they are aware of issues. Cllr Bush has asked for cameras but told funding is not available, he hopes that the new lease at sports ground will improve security. Cllr Crowe said police have increased rotation of night-time patrol cars in the area. The resident said it would be helpful to have clear guidance from the police on what residents can do.

A resident had asked about travellers on Manuplastics site on Kingston. Cllr Crowe said Merton Council and Met Police are aware and developer, who owns the land, has gone to High Court to seek an injunction and have the travellers removed. A resident said that on the 12 December 2018 Merton Council obtained a court order at the High Court to protect Merton Council land from travellers, allowing them to move them on easier than without it. Notices were placed on parks, and other council open spaces around the borough but this ran out in December 2021. More information can be found on Merton Council's [Unauthorised Encampment Protocol](#).

A resident had asked what was being done to improve cycling and walking in Raynes Park.

Cllr Crowe said Cllrs have applied to Ward Allocation fund to spend on improving cycle lane markings.

3 UPDATE FROM THE MP FOR WIMBLEDON (Agenda Item 3)

Stephen Hammond MP was detained by votes in the House of Commons so will be invited to the next meeting.

4 WARM AND WELL (Agenda Item 4)

Olivia McKay, Winter Warmth Engagement Officer for Wimbledon Guild, gave an update on the [Warm and Well Project](#). The project started in 2019 and is a partnership between Merton Council, Age UK Merton and Thinking Works.

Thinking Works is a free service in operating across five south west London boroughs that provides home energy assessments and assess eligibility for additional utility support. Thinking Works also provide a starter pack to residents that can help improve water and energy efficiency. Wimbledon Guild provides also provides referrals to Thinking Works for fuel vouchers. To be eligible you must be a Merton resident, and either over 65, have a long-term health condition or on a low income.

Wimbledon Guild also provide a handy person service, a free service for older people or those with long term health conditions, to do those small jobs that do not need technical qualifications and excludes gardening or decorating.

The Warm and Well project also provides outreach to share information and can refer to other Guild services.

Cllr Adam Bush asked how we can raise awareness of the service. Olivia said she can supply information packs. A resident asked if there was charge for the handy-person service, and Olivia said it was free.

For more information, please email Olivia omckay@wimbledonguild.co.uk

5 HIGH STREET TASK GROUP (Agenda Item 5)

Councillor Peter Southgate said that the Repurposing the High Street Task Group began in June 2020 and has taken a long time to complete. At the same time Your Merton and Merton 2030 funding has begun to take shape. Cllr Southgate said that the final report went to [Cabinet on 21 March](#) and Cabinet has formed a working group to implement the recommendations.

The findings included the importance of arts/cultural events; funding for town centre managers to provide a link to businesses; online/digital offer to promote local high streets; attract entrepreneurs who want to move to local spaces rather commute to central London; and link the high streets with nearby green spaces and create more greenery on high streets. The Task Group also acknowledged that each high street has a different history and culture, and this can be used to link communities to these spaces.

Cllr Southgate said the RPA has been effective in bringing residents and businesses together and this is not the case in other areas. Officers will begin to develop plans for each of the high streets. Cllr Southgate thanked everyone who had contributed to the review, including Cllr Bush, and the RPA.

Cllr Bush thanked Cllr Southgate for chairing the group effectively and hoped the report would create the momentum

Tony Edwards asked if Merton Council could apply to Govt High Street fund for additional support. Cllr Southgate said funds were being made available from Merton 2030, but if external funds could be leveraged that should be pursued so will raise this with officers. A resident said business rates had been an issue deterring new businesses, Cllr Southgate said one option is making smaller spaces but the whole system does need significant reform. A resident said government funding had supported parklets in Raynes Park and there is green space near Raynes Park High Street.

6 CORONAVIRUS BUSINESS SUPPORT GRANTS (Agenda Item 6)

Tony Edwards said Merton Council had £4.7m from government so support businesses who had not received funding from previous schemes. The support is in the form of business rates discount. The deadline is on 30 March 2022. Criteria can be found on the website <https://www.merton.gov.uk/coronavirus/business/grants/carf>

7 UPDATE ON LIBRARY CHANGES PILOT (Agenda Item 7)

Danny McDonald, manager of Raynes Park Library. Danny said there was a pilot in four libraries, including Raynes Park, to introduce electronic access using library cards. There have been some technical issues but otherwise customers have responded well. This will enable the library to open for longer but without staff on site, from 4 April. There is no reduction in library staff, but the security staff will be moved around other sites.

Health and well-being services, funding has been supporting Mind-space events including yoga, exercise introduction of health monitors on site. No social distancing and mask requirements but have been continuing to clean books and monitor air flow. Events returning with more participation than pre-pandemic. Will include ballroom dancing lessons as part of Jane Austen month. The library is handling bookings through [Eventbrite](#).

A resident asked about older people managing the access and if the pilot showed some people struggled. Danny said residents did struggle and will still need to scan 9.30am-1.30pm but there should be staff on hand to support on most occasions. A

resident said the business plan made it clear the pilot was to implement staff-less provision, Danny said that some of the time the library would be non-staffed but would check with the Head of Service about the business plan. A resident asked if volunteers would be available. Danny said adult volunteers would be welcome. A resident asked about access to the toilets, Danny said the toilets would be locked when the library was not staffed in case any accidents occurred. Cllr Crowe asked about extending opening hours into the evening. Danny said evening and Wednesday opening were being considered depending how the initial extension of opening hours goes. A resident asked what numbers of visitors were usually, outside of the pandemic. Danny said the number of visitors had been on decline which is why the library is focusing on becoming more of a community hub.

8 DISPOSAL OF RAYNES PARK SPORTS GROUND (Agenda Item 8)

Tony Edwards said that the new lease is being agreed and the lease will take into account the comments received by Merton Council. Jacquie Denton said concerns about footpaths and cycle ways have been raised but they will not be affected. Comments open until Thursday. Cllr Crowe asked about drainage issues and Jacquie said she can raise the issue with the tenants.

9 GENERAL UPDATES (Agenda Item 9)

Chris Larkman and Tony Edwards gave an update on local issues.

Land transfer has been completed to expand space for pedestrians on the south side.

National Rail are putting in gate to allow volunteers to access the railway embankment in order to support clearing and planting on north side.

There are still no parking restrictions on the kiss & ride so will be meeting with Workspace alongside Stephen Hammond

Parklet at Lyme and Thyme taken out temporarily due to Thames Water works.

Proposal for new public realm space - there is room for more space on the south side of the Skew Arch. Thames Water were keen to see more rain gardens in the area. Merton was turned down for £300k but will be reapplying in April to a new fund. RPA will be trying to coordinate these activities to improve the area. A resident asked about the possibility of a green wall by the AstroTurf. Tony said this is a good idea NR generally do not like things being added to their structures.

Flooding:

The best way to report flooding is via the “[Thames Water flooding questionnaire](#)” and reading the [Thames Water sewer flooding guide](#) which gives residents guidance on how to claim money off their Thames Water bill on the second last page. Both are available via the Thames Water flooding page [Flooding | Emergencies | Help | Thames Water](#)”

Tree Strategy Kris Witherington said that the Tree Strategy consultation had received more than 500 responses which were now being analysed. The team hoped to put together a draft strategy which will go out for consultation in around May.

10 COMMUNITY FORUM REVIEW (Agenda Item 10)

Kris Witherington, Engagement and Consultation Manager at Merton Council, gave a presentation on the review of the Community Forum meetings currently taking place. The presentation is attached to this report.

Merton Council is asking residents to provide feedback on their experience of the community forums, what they think works, and what they think could be improved. Kris has looked at what other types of engagement is taking place across London and ran through seven other models for engaging with residents.

Chris Larkman said the Forum is going well in Raynes Park and will need to adjust to new ward boundaries. The return of business breakfasts in Raynes Park will help improve the link with businesses. A resident said that having meetings on Zoom has had benefits and it would be better to keep the meetings as a hybrid of online and in person. A resident said they thought it would help to advertise the forum more prominently on social media.

11 ANY OTHER BUSINESS (Agenda Item 11)

Cllr Crowe thanked everyone for attending and closed the meeting

12 DATE OF NEXT MEETING (Agenda Item 12)

Future meeting:

Thursday 30 June 2022 at 7.15pm in Raynes Park Library

Any issues or questions can be emailed to getinvolved@merton.gov.uk

This page is intentionally left blank

WIMBLEDON COMMUNITY FORUM
23 MARCH 2022

(7.15 pm - 9.00 pm)

PRESENT Councillors Councillor James Holmes (in the Chair),

1 WELCOME AND INTRODUCTIONS (Agenda Item 1)

The meeting was held via Zoom and chaired by Councillor James Holmes. 8 residents and 8 councillors attended on Zoom with 118 additional views on YouTube. The Chair welcomed everyone to the meeting and explained how the meeting would work.

2 UPDATE FROM THE MP FOR WIMBLEDON (Agenda Item 2)

Stephen Hammond MP gave an update on major issues.

Stephen said what has happened in Ukraine was an aggressive and barbaric invasion by the Russian state. The UK Government and international response has been relatively quick and robust. He was concerned this could be a long period of attrition and siege, so we need to consider delivering food and essential supplies. The Refugee schemes took longer than expected to get up and running and forms should be easier to fill in. Stephen said he has been told the forms will be improved. Stephen has a list of people who want to volunteer and sponsor refugees and hope others will come forward

A planning application for the St George's East building has been passed by the Planning Applications Committee. The application is for a higher building than was expected, so would not have been permissible under new local plan. Stephen has written to Mayor of London asking him to review the application and there are a number of petitions against it. He has not had a response from the Mayor of London as yet.

The AELTC application on Wimbledon Park Golf club is controversial in Merton and Wandsworth with major concerns from a lot of residents. Stephen has met with All England and residents to try and find solutions. Concerns include the prolonged closure of Church Road in the summer, an application on Metropolitan Open land, the number of courts being more than at Roehampton, the scale and size of the new show court, the siting of maintenance buildings and whilst the new park is welcomed there are issues about how open it will be and who will be responsible for it. Stephen expects the application to be heard in Wandsworth after May elections and in Merton

at either the June or July meeting. There is also a covenant held by Merton Council that prevents building on golf course land, but this is subject to some legal interpretation, so the Council is taking legal advice on this. The planning application is separate to the covenant but could be used stop the project from going ahead. Stephen has written to both the Mayor of London and the Secretary of State. The Secretary of State has written to both councils but will wait for the decisions to be made.

The [Boundary Commission for England](#) is consulting on revised boundaries for Wimbledon constituency. Stephen has made a representation to keep the existing ten wards in the constituency rather than some leave and new ones join.

Cllr McGrath said that the Conservative group had voted against the local plan. Stephen said that clearly the group had objections to elements of the plan but the length of time for the new plan to be finalised means that it is a hinderance on the St George's East case. Cllr Kohler asked about the status of the covenant on Wimbledon Park, Stephen said that the resident association has had advice that the covenant is enforceable but he has not seen any advice received by Merton Council

Stephen said he is contactable via [email](#).

3 LONDON ASSEMBLY UPDATE (Agenda Item 3)

Leonie Cooper, Assembly Member for Merton and Wandsworth gave an update on activities at the London Assembly.

As restrictions come to an end pan-London bodies are still keeping a watching brief on COVID-19 across boroughs, especially hospital numbers.

The Assembly has passed a motion to ask the Government to improve the route for refugees from Ukraine. Leonie has been impressed by the number volunteers who have come forward to host families.

The Mayor of London's budget has been agreed including an increase in the Mayor's precept of 8% or around 60p per week for a Band D council tax house. The budget includes a £90m climate emergency fund to unlock investment into decarbonisation schemes; £23m to the violence reduction unit; £14m to provide opportunities to young people; £5m to buy back right to buy properties; £7.5m to advice service.

Transport for London has had a series of very short-term funding agreements with Government due to the drop in fares income caused by the pandemic. Passenger numbers still at only 60% of pre-lockdown levels. A long-term agreement is critical for TfL and the nationwide supply chains.

The Assembly Plenary session in March looked at the cost-of-living crisis, London living wage, fuel poverty, and London's economic recovery. Central London recovery slower than elsewhere in the country as creative, cultural and tourism has been hit harder than many industries.

March 2021 saw the murder of Sarah Everard and the poor handling of the vigil that followed. There are clear issues of race, gender and homophobic discrimination within the Met. Unfortunate that Met Police Commissioner Cressida Dick resigned in the way she did as she was popular with officers but clearly more action was needed to help rebuild trust.

Leonie has received a lot of representations about both the AELTC planning application and the St George's East Building. Assembly Members do not have a direct role in the decision but will be meeting with Deputy Mayor to express the concerns of constituents which have been raised.

A resident asked about stopping the congestion charge at weekend. Leonie said that changing congestion charges is part of the agreement and negotiations between TfL and the Department for Transport as is the expansion of ULEZ.

A resident asked about the 8% increase in Mayor precept. Leonie said that grants from central government were underfunding London services, including around £200m for Met Police taking on national tasks.

A resident asked about the spending of £2b on the new Silvertown Tunnel which four of the local councils disagree with. Leonie said that the funding is coming from a private company who will recoup the funding from tolls. The tunnel has been agreed due to the comparatively small number of crossings in the east of London. The improved connectivity will reduce congestion and improve air quality, according to TfL modelling, and open up routes for electric buses. Similar approaches have worked elsewhere. Mayor has to look at issue for the benefits for the whole of London, as well as the impact on the four councils.

Cllr Holden asked when Deputy Mayor might make a decision on St Georges House East and Leonie said she did not know yet but will update if she hears anything.

A resident asked if Leonie regretted not supporting campaign against siting Harris School in South Wimbledon due to pollution in the area. Leonie said she has pushed the Mayor hard on the issue of air quality to increase measures to gradually shift away from polluting cars. A new enlarged ULEZ has a much higher compliance rate, so it is right to extend this to the whole of London. Leonie will continue to campaign for improvements in air quality. It is not about individual locations, we need to tackle pollution everywhere, as WHO have said there is no safe level of pollution. Leonie

will also be pushing the Mayor to phase out diesel busses and replace them with electric ones.

Cllr Benbow asked why there are still no safety measures in place surrounding Harris School at High Path? Cllr Benbow said that two young schoolboys were involved in a nearby crash a few weeks ago, both had minor injuries. Leonie said this would need to be raised with Merton Council.

Residents can contact Leonie by [email](#).

4 HIGH STREETS TASK GROUP (Agenda Item 4)

Councillor Peter Southgate said that the Repurposing the High Street Task Group began in June 2020 and has taken a long time to complete. At the same time Your Merton and Merton 2030 funding has begun to take shape with recognition of the importance of our high streets. Cllr Southgate said that the final report went to [Cabinet on 21 March](#) and Cabinet has formed a working group to implement the recommendations.

The findings included linking high streets with nearby green spaces and create more greenery; the importance of arts/cultural events; funding for town centre managers to provide a link to businesses; online/digital offer to promote local high streets; and attract entrepreneurs who want to move to local spaces rather commute to central London. The Task Group also acknowledged that each high street has a different history and culture, and this can be used to link communities to these spaces.

Wimbledon is the most significant town centre with an infrastructure to support it including the BID which can act as a town centre manager. The plans for Romulus to open up Centre Court and provide small workspaces and not look to an anchor tenant to replace Debenhams. WimbleTech in the library acts as a incubator for small businesses and this could be harnessed. Wimbledon also has the most developed cultural offering. Wimbledon suffers from a lack of green space in the centre but there is scope to make visitors more aware of South Park Gardens. A trail could help link the town centre to these areas.

Officers will begin to develop plans for each of the high streets, but this will need to involve local organisations and civic groups. Cllr Southgate thanked everyone who had contributed to the review including Cllr Kohler.

A resident asked if the plan included other high streets. Peter said that yes five town centres were covered Morden, Mitcham, South Wimbledon, Wimbledon and Raynes Park.

A resident asked what reservations the Cabinet had with the report? Peter said that the Cabinet was supportive of the recommendations, and these will be developed by the officer group. The administrations broad priorities follow a similar direction of travel

A resident asked about financing for these plans. Peter said the Merton 2030 programme includes financing for town centres, including £300k for Morden, for a town centre manager in Mitcham and for an incubator.

A resident asked of there were plans for South Wimbledon and Peter said there were specific ideas for South Wimbledon in the report.

Cllr Holmes thanked Cllr Southgate and Cllr Williams for their service on the Council as they are not standing in the next election.

5 WARM AND WELL (Agenda Item 5)

Olivia McKay, Winter Warmth Engagement Officer for Wimbledon Guild, gave an update on the [Warm and Well Project](#). The project started in January 2019 and is a partnership between Merton Council, Age UK Merton and Thinking Works.

Thinking Works is a free service in operating across five south west London boroughs that provides home energy assessments and assess eligibility for additional utility support. Thinking Works also provide a starter pack to residents that can help improve water and energy efficiency. Wimbledon Guild provides also provides referrals to Thinking Works for fuel vouchers. To be eligible you must be a Merton resident, and either over 65, have a long-term health condition or on a low income.

Wimbledon Guild also provide a handy person service, a free service for older people or those with long term health conditions, to do those small jobs that do not need technical qualifications and excludes gardening or decorating.

The Warm and Well project also provides outreach to share information and can refer to other Guild services.

6 LOVE WIMBLEDON UPDATE (Agenda Item 6)

Craig Hurring, Chief Executive of Love Wimbledon had provided an update which was shared at the meeting.

Apologies I cannot be with you this evening, I would have loved to meet more of the local community tonight, but regrettably I have an unavoidable childcare clash. I will do my utmost to attend the next meeting in June.

I have been in post as the new Love Wimbledon Chief Executive for just over 2 months now, following Helen Clark Bell's decision to step down after 10 years in the role. The BID begins its third term on 1st April 2022, and much of my immediate work has been focused on renewing our vendor and supplier contracts for the new 5-year BID term and setting budgets for our immediate work in 2022/23. We're also experiencing some personnel changes, with 2 retirements this year following in the wake of Helen's departure, meaning the team will look different by the time we are back to full strength, and I am more fully established in my role.

I've been keen to meet as many stakeholders as possible since being in post and have been introduced to a number of Love Wimbledon's important levy payers, key suppliers, Councillors, Merton Council representatives, Stephen Hammond MP and other bodies operating within the wider Wimbledon area. They have provided a warm welcome and together helped me to build a good understanding of the impact of Covid on Wimbledon Town Centre, and where there are opportunities for us all as we plan for recovery. This will be a major focus of the BID's work over the coming months, as we consider how to take our pandemic learnings into building a vision for what Wimbledon Town Centre offers residents, domestic visitors, international tourists, current businesses, and future businesses both in terms of our high street offering and evolving workplaces.

We've also been busy bringing activations back into the town centre, to coincide with a growth in footfall since restrictions were eased early in 2022. For Valentine's Day we installed a heart installation in the Piazza, which had real impact and was extremely well received, with partners, families and pet owners sharing their love with our wooden heart. We also relaunched our monthly market programme at the start of March, with Rock Choir kicking things off in style. We will be running a range of different market events throughout the year, including ones focusing on sustainability and Friday markets for more of a mixed residential and business audience.

It's been a busy time for Love Wimbledon too in terms of our work supporting keeping the town clean. Covid has had a real impact on waste collection in the early part of 2022, and we're working with Merton Council, Veolia, First Mile, and other waste contractors currently to deliver over 200 additional outcomes a month in terms of removing fly tipping, flyposting, and additional waste collection for our businesses. Our monthly Community Clean programmes have resulted in 80 interventions already this year to remove a spate of graffiti tagging and provided additional jet washing to clean up some key areas. We will also be arranging a deep clean of Hartfield Walk next month, ahead of some snagging work which we wanted to do once the area had been through the winter period, while celebrating its first anniversary.

Moving forward we have a busy programme of events planned that I will be able to discuss in more depth at the next Community Forum in June. This includes a number of installations across the town centre to celebrate the Queen's Platinum Jubilee, including a design competition for local children and the return of some of Love Wimbledon's larger town centre activities, including Big Screen Tennis for the Wimbledon fortnight. From a green and sustainable perspective, we'll be launching a

cargo bike pilot programme for our businesses soon, with the support of Cross River Partnership and Merton Council and will be testing this with a range of different scenarios to establish how useful it will be to our businesses.

Once again, I'm sorry I couldn't join you tonight, and I am looking forward to working with you over the coming months. Please do get in touch if you'd like to meet, I am really keen to see as many people as possible over the coming months.

Cllr Holmes thanked Helen Clark-Bell for her contribution to the Forum.

7 COMMUNITY FORUM REVIEW (Agenda Item 7)

Kris Witherington, Engagement and Consultation Manager at Merton Council, gave a presentation on the review of the Community Forum meetings currently taking place. The presentation is attached to this report.

Merton Council is asking residents to provide feedback on their experience of the community forums, what they think works, and what they think could be improved. Kris has looked at what other types of engagement is taking place across London and ran through seven other models for engaging with residents.

Cllr Holmes said it was disappointing to see numbers of attendees decline during the pandemic, so this is an important opportunity to revitalise the forums.

A resident said it would be good to keep the forums accessible live online even if they go back to being held in the library, a hybrid model perhaps, and wider advertising is needed.

8 OPEN FORUM (Agenda Item 8)

At a previous meeting residents had asked about enforcement action being considered against Trust Ford after they had removed 11 trees. The Council has insisted that 11 trees are replaced with 11 semi-mature London Plane trees and that an additional 12 new Silver Birch Trees were planted along the River Wandle. The Council has also put 26 tree preservation orders on trees on the site. As a result no further enforcement action will be taken.

A resident asked about the Highways team applying tarmac over tree pits. Cllr Fairclough has raised this issue with the Highways team and their response was: *"I can advise that after consultation with those in green spaces and reviewing the documentation over keeping the footway safe to road users we have agreed to move to a clear 150mm gap between the tree and the edge of the Blacktop, we will also be introducing a trial of a 100mm gap along the exposed tree roots where these do not result in a risk of slip and trip in the main walked route. As I am sure you are aware*

the Code of Practice a Risk Based Approach has meant even more burden on the Highway Officer when agreeing to the right method of repair in these matters.”

A resident said that public realm designs are often not very functional, for example outside the station, and asked how the community can get involved in these decisions that affect us all. Cllr Holmes said the forum was one way, but the station forecourt is owned by South West Trains so is harder to influence than Council owned land.

Councillor Holmes thanked everyone for attending and closed the meeting.

9 DATE OF NEXT MEETING (Agenda Item 9)

Future meetings, all at 7.15pm:

Wednesday 15 June 2022 in the Arts Space at Wimbledon Library

Wednesday 21 September 2022 in the Arts Space at Wimbledon Library

Wednesday 30 November 2022 in the Arts Space at Wimbledon Library

Wednesday 22 March 2023 venue to be confirmed

Community Forums

Your feedback 2022

Page 111

Why have a review?

- 10 years since last major changes
- Pandemic has introduced new technology options introduced
- Your Merton engagement showed desire for more engagement

What do we want to know?

- We want to know what you think works currently and what can be improved
- We want your views on different approaches
- We have looked at what other boroughs do to see what alternatives exist
- We found 8 different models in London, including those that are similar to Merton

Area Committees

- Formal committees of the council
- Councillors supported by co-opted residents associations or other groups
- Public meetings at which residents can speak
- Example - Sutton

Externally managed forums

- Networks or forums delivered by local organisations external to the Council
- Can involve existing residents groups
- Mix of public meetings and online discussion
- Example - Lambeth

Digital Panels and Boards

- Panels are representative group or residents who complete regular online surveys

Page 6

Example – Kensington & Chelsea

- Discussion Boards are online discussion groups
- Example – Barking and Dagenham

Question time events

- Public meetings where elected councillors and officers can be questioned

Page 717
Can be either borough wide or locally focused

- Example – Mayor of London; Wandsworth

Citizen Assemblies

- Randomly selected group of residents discuss and recommend solutions to a particular issue
- Example - Newham

Councillor led structures

- Ward councillors organise and host local meetings in their ward

Example - Ealing

Have your say

- www.merton.gov.uk/consultations

• Complete the survey by 4 April

• Any questions or comments?

WIMBLEDON COMMUNITY FORUM

15 JUNE 2022

(7.15 pm - 9.00 pm)

PRESENT Councillors Councillor Paul Kohler (in the Chair),

1 WELCOME AND INTRODUCTIONS (Agenda Item 1)

The meeting was held at the Arts Space in Wimbledon Library and chaired by Councillor Paul Kohler. 15 residents and 6 councillors attended with 38 additional views on YouTube. The Chair welcomed everyone to the meeting and explained how the meeting would work.

Cllr Kohler thanked James Holmes for his work chairing the community forum.

2 LOCAL POLICING AND COMMUNITY SAFETY (Agenda Item 2)

Sgt James Peppitt gave an update on local policing and community safety issues. Sgt Peppitt is covering the Wimbledon Safer Neighbourhood Teams (SNTs) as Marcia Heritage is currently acting Inspector for the area.

James said his priorities include rebuilding trust in the police as there seems to be a drop shown in recent surveys. As a result it is important for officers to be seen out and about and to tackle key local crimes. The local SNTs have changed to match the new ward boundaries but the Police IT system is yet to catch up so is still working on the old ward boundaries.

There is a plan for policing the town centre during the Wimbledon tennis fortnight, including the use of special constables. In addition to combat anti-social behaviour in the evenings there will be additional patrols in the evening and into the night on Thursdays, Fridays and Saturdays over the summer. A number of 6-month probationers have joined the local teams to provide additional capacity.

Merton has overtaken Sutton as the third safest borough in London behind Richmond and Kingston. There have been a number of issues with dangerous dogs, and several warrants have been issued with further investigations underway.

A resident asked if the Mayor of London's commission on policing cannabis will change impact on operations. Sgt Peppitt explained that for low level offences there is already a system of Community Resolution, which acts as a warning and officers can also refer to diversion activities like Catch 22 and the Youth Offending Team.

A resident asked Sgt Peppitt why there had been a drop in public confidence in the police. James said that there have been some concerns about visibility and how easy it is to contact the local SNT. As part of the response officers will be going round a different street each week to introduce themselves to residents. James has not seen the detailed results of the surveys so is not sure what other factors have been identified. Results from the surveys are available from the [MOPAC website](#).

Residents can access police contact details on the [Met Police website](#) or you can email the ward teams:

Abbey Ward – SWMailbox-.SNTAbbey@met.police.uk

Hillside Ward – Hillside@met.police.uk

Wimbledon Town Centre & Dundonald Ward – Dundonald@met.police.uk

The Wandle Ward mailbox is currently being created, for now residents can email Trinity@met.police.uk.

Cllr Kohler reminded the meeting that each ward has a Panel and residents can get involved by contacting their local SNT.

A resident asked how many officers are in each SNT. James said it is usually two officers and one PCSO per ward, with a Sergeant covering three or four wards. A resident suggested advertising on community noticeboards, and James said he was looking into these options, and knew they needed to utilise more channels to reach residents.

A resident asked about the impact of the uncertain future of Wimbledon police station on confidence in the police locally. James said this has certainly been raised locally by residents but would need to check if the surveys had picked up on this.

Cllr Stringer said that the Met Police are still reviewing their estate strategy, and this has been pushed back until later in the year. Currently there are more officers using Wimbledon station which is good news for its potential future.

A resident asked if crime is going up or down post Covid. James said that some crimes have increased as a result of people being out again whilst others have come down. There has been a decrease in burglary compared to three months ago, but an increase in robbery over same time period. The teams look at trends and then plan accordingly. There is a Burglary and Robbery Team in CID that also look at trends and inform the SNT work. As a result, it is still really important for residents to report crimes.

A resident asked about enforcement on the use of E-scooters. James said there is an official rental scheme being piloted in other boroughs, but many users do not know

that they need a license and insurance for privately owned vehicles, so officers do a lot of education. The Safer Transport Teams do a lot of operations, including fining and seizing scooters, and whilst SNT will deal with them it is not usually a priority. The Police are currently waiting on a government review of the law.

A resident asked about the impact of economic trends on crime as the cost-of-living crisis escalates, and James said it was possible it would have impact, but he was not sure exactly what. A resident asked about the theft of catalytic convertors, James said this is a difficult crime to enforce given the speed with which it can be done. There is an ongoing race with car design to prevent theft and the methods criminals use. SNTs check with local scrap metal merchants to make sure they are not trading in catalytic convertors. James would encourage residents to call if they see anything suspicious.

A resident asked about enforcing speed limits, especially in 20 MPH zones. James said residents can raise problem roads with your local SNT and they can work with the Safer Transport Team. Training is required to use speed guns correctly, but the police can support Community Speed Watch, with residents using them as a deterrent. It also helps residents understand what excessive speed looks like. To enforce 20MPH some form of traffic calming is helpful.

3 OPEN FORUM (Agenda Item 3)

A resident raised the issue of roads in Wimbledon being named after two individuals, Joseph Marryat MP and John Sawbridge-Earle-Drax MP, who owned slaves. Merton Council had passed a resolution in March 2020 in recognition of Black Lives Matter but there has been no action on names of these roads. The resident wrote to all councillors 15 months ago but said he had not received any response although Cllr Kohler as Chair said he knew of at least one councillor who had responded. Wimbledon High girls' school has renamed their sports hall as a result, whilst the Drax family still owns the sugar plantation in the Bahamas. The resident said that councillors could arrange to change the names or add a note to road signs. Another resident said that it would be interesting to share the history of road names in Wimbledon as part of heritage events.

Cllr Kohler said that CFs can submit a motion to the council and the Forum agreed to submit a motion to the next Council meeting. The motion reads:

The Wimbledon Community Forum notes that some roads in Wimbledon are named after former residents who were slave owners. The Forum calls on Merton Council to consider including historical information in the vicinity of such road signs including the fact they are named after slave owners.

Cllr Stringer said that the administration has been thinking a lot about priorities for young residents from BAME backgrounds and have been addressing the issues raised by those communities. Cllr Stringer said she would be happy to take this away and speak with colleagues.

A resident raised the issue of litter and maintenance in Dundonald Rec. The parks team have provided the following response: Our service delivery partners idverde administer the day to day running of our parks and open spaces. Where there are seasonal demands put on our facilities, idverde are required to increase their emptying frequency to address this and this is something that we will highlight to them. We appreciate the playground is well regarded by its users, again idverde inspect this facility on a weekly basis, the roundabout does have a mechanical speed restrictor in place, but we will ask idverde to visit the site and asses this particular unit, any associated works (if required) can then be scheduled.

Cllr Kohler recommended residents consider registering and using the [Fix my street app](#). A residents said that has been problem with items being closed on the app when they have not actually been dealt with. Cllr Stringer said sometimes this is due to issues on private land but the problem is being looked into.

A resident raised the issue of delivery mopeds using the Wimbledon Bridge parking bays intended as drop off spaces for the station. Cllr Kohler said this issue has been discussed at the Location Board, a multi agency council group that includes local councillors, and there was due to be an update at the next meeting on Thursday 23 June. Craig Hurring from Love Wimbledon, had also provided information that the key thing we need to happen is to ensure the delivery companies update their algorithms to ensure drivers wait at the location provided in the Hartfield Road and St George's car parks. Love Wimbledon is ready to support and promote these locations as soon as it is confirmed, and signage is available.

A resident had also asked about the License application for the new Travelodge in Hartfield Road which has applied for 24-hour License but was satisfied to learn this included a condition limiting alcohol sales to hotel residents and their bona fide guests between 11pm & 10 am daily.

A resident asked about food waste bins being accessed by foxes and asked if the bins can be made more secure. Officers will report this to the Public Spaces team. A resident said that it would help if public bins could be cleared quicker. Cllr Stringer said Merton Council has issued a [Service Improvement notice](#) to the contractor. A resident said that food waste bins in communal flats were not designed or being used properly. Cllr Kohler suggested that this could be raised with Clarion, and another resident said that Clarion are aware of these issues nationally and will be looking into the problem.

David Hall from Wimbledon Community Association gave an update on the work of the organisation. Their [Wimblecomm](#) website promotes local community spaces. There are three trustees, and two members of staff so welcome involvement from other residents. The groups are looking to create an Ambassadors scheme.

A resident raised the issue of the removal of the countdown indicator for buses on Wimbledon Bridge outside Centre Court. Officers will raise this with Transport for London.

Cllr Stringer encouraged residents to respond to the Mayor of London's [ULEZ consultation](#), which is open until 29 July 2022.

4 FUTURE COMMUNITY FORUM MEETINGS (Agenda Item 4)

Cllr Kohler asked residents what they would like to see at future meetings and how we might encourage greater attendance. Cllr Stringer said she has taken responsibility for Community Engagement and is also keen to hear residents' thoughts.

Suggestions included:

- Register for [alerts on website](#)
- Reach out to Resident Associations
- Encourage attendees to spread awareness by word of mouth
- List the meetings in local newspapers
- Use Facebook advertising

A resident commented that people don't know what community Forums are for, and Cllr Kohler said he is keen for Forums to use their powers and have a stronger role.

5 DATE OF NEXT MEETING (Agenda Item 5)

Future meetings, all at 7.15pm

Wednesday 21 September 2022 in the Arts Space at Wimbledon Library

Wednesday 30 November 2022 in the Arts Space at Wimbledon Library

Wednesday 22 March 2023 venue TBC

This page is intentionally left blank

Liberal Democrat – Non-Strategic theme motion – Council, 6 July 2022

Cost of Living Emergency – Living Wage Accreditation

Council Notes:

1) That low pay still affects many people in Merton and that the Cost-of-Living crisis is making their situation worse

2) The successful Liberal Democrat amendment to the Budget resolution passed by Council in March 2021:

"G) welcoming the provision in the MTF5 for increased contract costs/LLW for contracts due to be re-let in 2022/23 onwards, requests Cabinet make real movement towards paying the London Living Wage to care workers employed by outside contractors as and when each contract comes up for retendering and/or renegotiation."

Council requests that Cabinet present a paper to the September full Council meeting on the costs, implications and timescale for Merton to become a Living Wage Employer, accredited by the Living Wage Foundation.

Councillor Anthony Fairclough Councillor Robert Page Councillor Matthew Willis

This page is intentionally left blank

Labour – Non Strategic Theme Motion – Council, 6 July 2022

Motion Cost of Living Emergency

This Council notes that:

- The Royal College of Psychiatrists has reported that the cost-of-living crisis “poses a threat of pandemic proportions” to the nation’s mental health.
- On 1st April 2022, Ofgem increased the energy cap by 54%. For a typical household paying by direct debit it's now £1,971/year – up by a massive £693/year, from its previous level. Those on prepay, the price cap has also increased by 54%, from £1,309/year to £2,017/year on typical use – a rise of £708/year.
- Workers have seen their National Insurance contributions increased from 12% to 13.25% on 6 April to fund the response to the Covid NHS backlog and new investment in adult social care.
- Additionally – and in this same timeframe – food prices and fuel are rising caused by global inflation post-pandemic and the conflict in Ukraine.

This Council recognises the unprecedented financial pressures that all our residents will face in the coming year, and notes with serious concern, that for those with low or insecure income, these pressures could prove overwhelming.

The Council, therefore, declares a ‘Cost of Living Emergency’.

Recognising that it has a part to play in response, this Council has:

- Established a £2 million Cost of Living Emergency Fund to target support to residents and voluntary organisations to alleviate the financial burden facing our residents.
- Set up a series of Cost of Living events across the borough to reach those most in need to inform them of resources and support available
- Maintained one of the country’s most generous Council Tax Support schemes for residents on low incomes
- Created a ‘Cost of Living’ Hub on our website to help residents find services that can support them through financial difficulty
- Pledged to continue provision of Free School meals to those eligible throughout the school summer holidays

In addition, this Council will:

- Build on its status as a London Living Wage employer to ensure Merton becomes a London Living Wage Borough
- Appoint a London Living Wage Champion to drive forward this work
- Convene a summit of voluntary organisations to discuss how best to provide support to those most in need

The work of alleviating the Cost of Living crisis is not the Council's alone. Therefore, this Council calls on the Government to:

- Continue funding the provision of Free School Meals during school holidays
- Extend support to schools and sporting facilities to mitigate against the increase in energy prices, so that children and families will not miss out on crucial education and exercise opportunities
- Extend to Merton the Money and Pensions Service (MaPS) pilot which joins up the mental health sector with debt advice services for people in mental health crisis to avoid spiralling debt

Cllr Eleanor Stringer

Cllr Billy Hayes

Cllr Billy Christie

Committee: Council

Date: 6 July 2022

Subject: Changes to Membership of Committees and related matters

Lead officer: Hannah Doody, Chief Executive

Contact officer: Amy Dumitrescu, Democracy Services Manager

Recommendations:

That the Council:

1. Notes the changes to the membership of Committees that were approved under delegated authority since the last meeting of the Council.
-

1 PURPOSE OF REPORT AND EXECUTIVE SUMMARY

- 1.1. This report asks Council to note the changes made to committee memberships under delegated authority since the publication of the agenda for the last ordinary Council meeting on 2 February 2022.

2 DETAILS

- 2.1. The following membership changes have been made by the Chief Executive under their delegated authority in accordance with section 1.4 of part 3F of the Constitution:

2.2.

Committee	Member resigning	Replaced by	Date
Standards and General Purposes Committee	Cllr Stephen Crowe	Cllr Andrew Howard	7 March 2022
Standards and General Purposes Committee	Cllr John Dehaney	Cllr Joan Henry	8 March 2022
Standards and General Purposes Committee	Cllr Brenda Fraser	Cllr Stephen Alambritis	10 March 2022
Children and Young People Overview and Scrutiny Panel	Cllr Omar Bush	Cllr Nigel Benbow	15 March 2022
Licensing Committee	Cllr Sheri-Ann Bhim	Cllr Helena Dollimore	6 June 2022
Healthier Communities and Older People Overview and Scrutiny Panel	Cllr Max Austin	Cllr Thomas Barlow	15 June 2022

3 CONSULTATION UNDERTAKEN OR PROPOSED

- 3.1 None for the purposes of this report.

4 FINANCIAL, RESOURCE AND PROPERTY IMPLICATIONS

4.1. None for the purposes of this report.

5 LEGAL AND STATUTORY IMPLICATIONS

5.1. The information regarding membership changes in this report complies with legal and statutory requirements. Council is required to accept nominations made by political groups.

5.2. The Housing and Local Government Act 1989 contains provisions relating to the political balance on committees, the duty to allocate seats to political groups and the duty to give effect to allocations.

6 HUMAN RIGHTS, EQUALITIES AND COMMUNITY COHESION IMPLICATIONS

6.1. None for the purposes of this report.

7 CRIME AND DISORDER IMPLICATIONS

7.1. None for the purposes of this report.

8 RISK MANAGEMENT AND HEALTH AND SAFETY IMPLICATIONS

8.1. N/A

9 APPENDICES – THE FOLLOWING DOCUMENTS ARE TO BE PUBLISHED WITH THIS REPORT AND FORM PART OF THE REPORT

9.1 None.

10 BACKGROUND PAPERS

Documents from the authorised officer confirming approval of the membership changes agreed under delegated authority.